

Education

Specification Guide to Floors, Walls & Accessories

gerflor.co.uk
gerflor.ie
gradus.com



Gerflor[®]

GRADUS



**A NEW LEVEL
OF INNOVATION,
QUALITY, SERVICE
& TEAMWORK**



**NEXT DAY SERVICE
PRODUCT EXPERTISE
WARRANTY
SUSTAINABILITY**



**FLOOR COVERING
STAIR EDGINGS
FLOOR TRIMS
MATTING
WALL PROTECTION
LIGHTING**

Contents

Gerflor | Gradus

The Education Specialists	4
Gerflor Gradus - Services	6
Comprehensive Education Solutions Map	8

Education Areas

Entrance & Reception Areas	10
Corridors & Hallways	12
Classrooms	14
Sports Halls	16
Outdoor Sports Areas	18
Changing Rooms	19
WC's	20
Wet Rooms & Shower Rooms	21
Libraries	22
Laboratories	23
Dining & Assembly Halls	24
Kitchens	25
Mainframe Rooms	26
Computer Rooms	27
Head Teachers Office	28
Staff Rooms	29
Sensory Rooms	30
Case Studies	31
Innovation, Service & Design	32
Our Commitments for a Sustainable Future	34

View our full colour range



The colour options shown within this brochure are just a small selection, full colour ranges are available on our websites: gerflor.co.uk and gradus.com

Disclaimers

Due to printing limitations there may be variations between the colours of the actual flooring and images shown in this document. The technical information contained in this brochure is subject to change at any time due to products being subject to continuous improvement processes. Please check latest technical information on our websites www.gerflor.co.uk & www.gradus.com or with a sales advisor prior to ordering.

Gerflor & Gradus – The Education Specialists

With over 100 years of combined experience in the education sector, together we have built an unrivalled reputation for quality and service.

The **Gerflor group** is well known as a credible and valued supplier of complete flooring solutions designed specifically for the education market. The constraints of hygiene, slip resistance and acoustic qualities are part of mandatory characteristics for this sector.

Our expertise allows us to offer numerous flooring products suitable for all areas of an education facility. Whilst maintaining the technical performance and the design aspect of our floorcoverings, we manufacture our ranges with the environment in mind as well as the health and wellbeing of end-users. We have recognised brands ideal for education facilities including our Mipolam, DLW, Taralay, Taraflex®, Tarasafe, Creation and Gradus carpet ranges.

Gradus is a UK manufacturer of contract interior solutions, these include stair edgings, floor trims, barrier matting, wall protection and lighting. As the leading UK manufacturer of these solutions, we support our customer's projects to provide safe, accessible, attractive and inclusive environments for all users. Gradus controls the design of products from initial concept through to final manufacture, including specialist CAD design and the manufacture of tooling.

This ensures that quality is maintained and provides customers with an efficient, flexible, and fast service. We also offer site survey, project management and installation services for our wall protection, entrance matting and lighting products.



Many years of understanding the Education sector has shown us the key considerations required to deliver a successful contract interior project...



Welcoming & attractive environments

Gerflor and Gradus offer a wide range of design driven products for all areas in an educational facility, perfect for creating an inspiring, engaging and unique space. Choose from a large range of designs across our flooring and wall cladding products, or for something truly individual use our bespoke Myfloor and printed wall cladding services.



Inclusive spaces

Designing inclusive learning buildings can play a significant role in the education of pupils with a diverse range of needs. Gerflor and Gradus offer a complete range of floor, wall and LED lighting to suit the needs and values of all types of schools.



Reducing the risk of slips, trips and falls

According to the Health and Safety Executive (HSE), slips and trips account for over a third of all major injuries in buildings. Gerflor flooring has been developed to offer excellent slip resistance. Gradus' uniquely designed stair edgings also play a crucial role in preventing slips, trips and falls on stairs.



Reducing life cycle costs

Education facilities are highly active environments with frequent movement of both equipment and people, necessitating the use of durable and easy-to-maintain materials. To address this need, Gerflor offers flooring products made from high quality materials. Additionally, Gradus barrier matting and wall protection can play a significant role in reducing a buildings life cycle costs by decreasing maintenance and repair expenses.



Sustainability

Gerflor and Gradus provide flooring, wall covering, and accessory solutions designed with sustainability in mind. Many of these products include recycled materials and are manufactured to be recyclable at the end of their life. They are engineered for durability and ease of maintenance, which can help reduce resource use over time. These initiatives aim to support carbon reduction efforts within the construction sector, and details of recycled content and certifications are available upon request.

Gerflor & Gradus Services

Technical and Specification Support Specialists

Our dedicated education specialists can assist you with all your specification needs. Whether it's a refurbishment project or new build, we have the expertise and innovations to create your ideal interior scheme. We work together to propose the optimum solution for the clients' needs, utilising the most appropriate safe, durable and sustainable solutions for the specific applications. We don't stop at just providing specification advice, we can also provide a free site survey where we will visit, assess and audit the facility and make suggestions on improvements to future proof the building interiors.



The Technical Support team is available to offer advice on the specification and installation of products, including guidance surrounding the latest building standards and legislation. Be rest assured that Gerflor & Gradus have a world-class pedigree of products that are tried and trusted to deliver every time. All backed up by a network of technical, specification and customer support teams.

Sampling Support Services

We offer a free sample service for all our clients from product overview binders, loose samples to supporting literature. For something bespoke like mood boards or test material, contact us and we will aim to supply the sample for your required need. To request a sample, literature, or anything else call 01625 428922 or email contractuk@gerflor.com or imail@gradus.com.

Local stock

We stock our best-selling product ranges locally in the UK. Our warehousing and distribution facilities in Winsford and Macclesfield offer a broad range of in-depth stock to provide an enhanced service level. Essential when time is of the essence and our customers need innovative products and fast delivery for essential quick turnaround projects. Speak to our education specialists for stock availability or further information.



Specification Documents and BIM Objects

NBS provides access to a single source of product information and BIM objects for Gerflor & Gradus products. NBS Source provides an additional level of enhanced product data in a consistent, structured format that will integrate seamlessly into your project workflow.

Education Lunch & Learn Sessions

Our education specification experts are available to help with developing knowledge surrounding Flooring, Barrier Matting, Wall Protection, LED Lighting, Stair Edgings and Floor Trims.

For something less formal than a traditional CPD, a Lunch & Learn session with our education specialists can be arranged at a time and date to suit you and people can drop in as they wish to discuss our products generally or address specific project requirements.

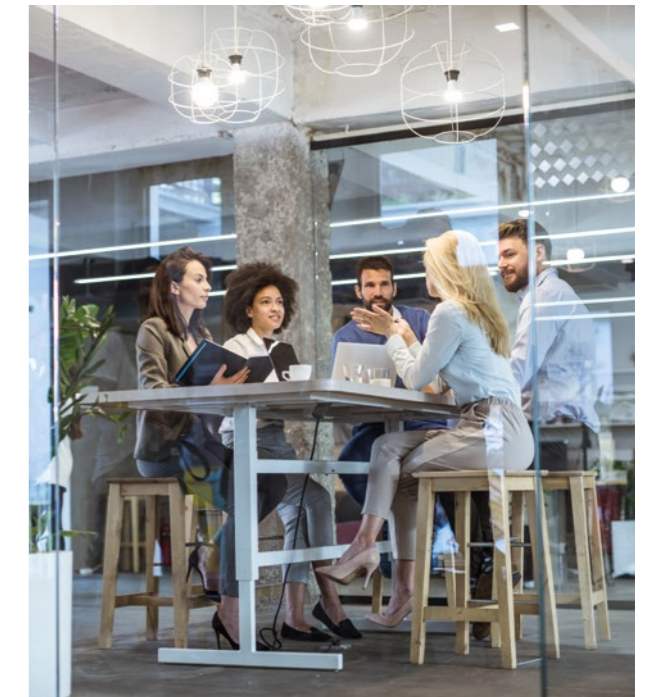
To book a Lunch & Learn session, contact our Technical Support team on 01625 428922, email contractuk@gerflor.com or imail@gradus.com.



CPD's and Training

As members of RIBA CPD Providers Network, we offer a full range of RIBA assessed and approved CPD seminars covering: Vinyl Flooring, Sports Flooring, Matting, Wall Protection, Stair Edgings and industry specific CPD's such as Healthcare and Industry.

To book a CPD Seminar, contact our Technical Support team on 01625 428922, email: contractuk@gerflor.com or imail@gradus.com.

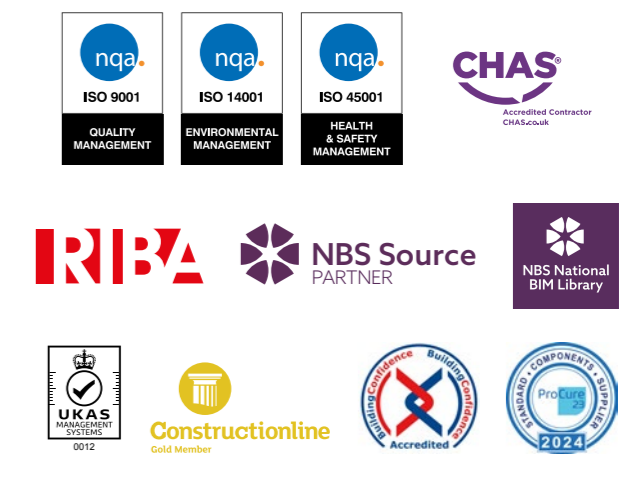


Accreditations and Certifications

Gerflor

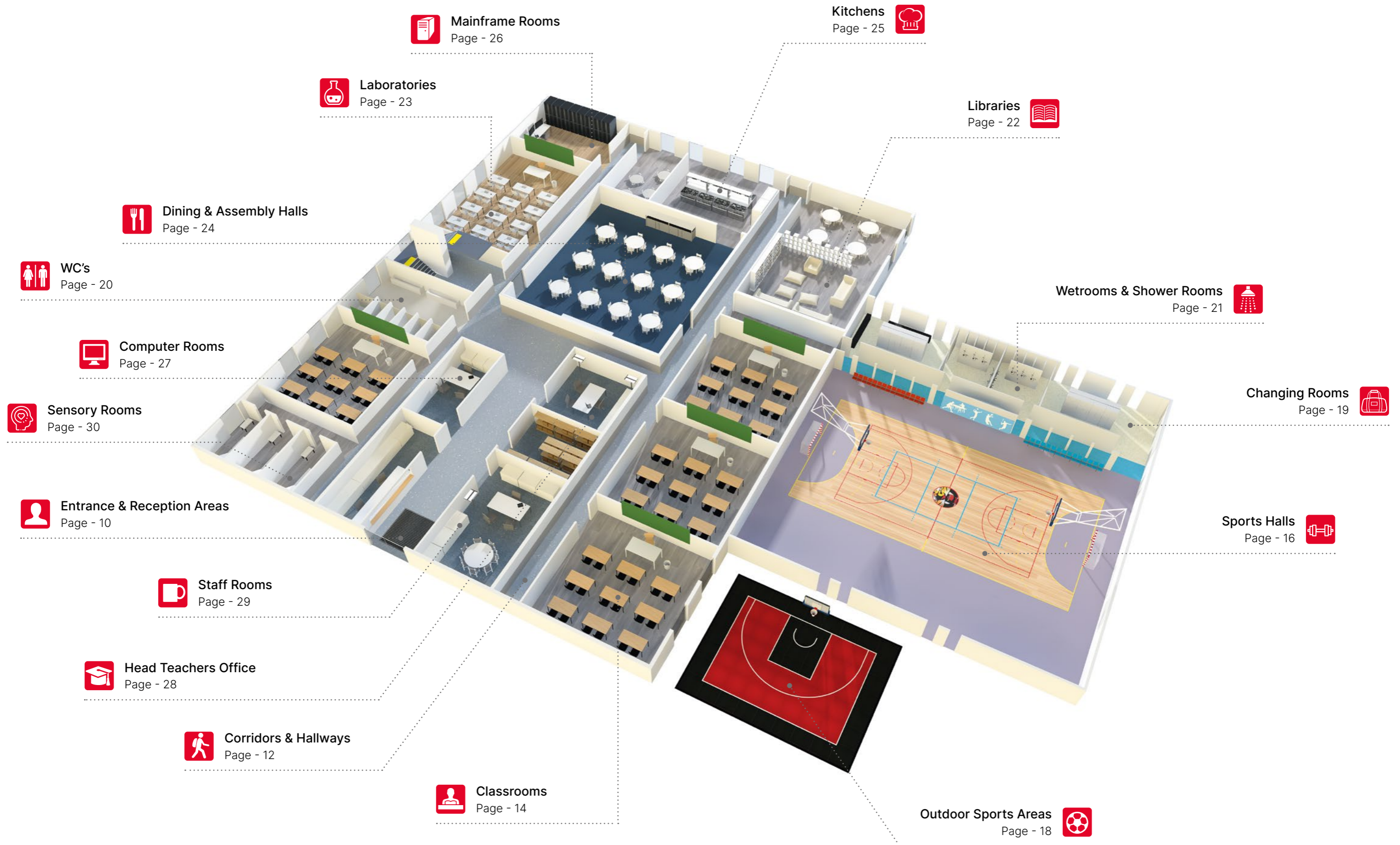


Gradus



Comprehensive Education Solutions

A complete range of floor & wall solutions for all areas of education facilities.



Entrance & Reception Areas

Key considerations when selecting Flooring and Wall Protection products for Entrance & Reception Areas

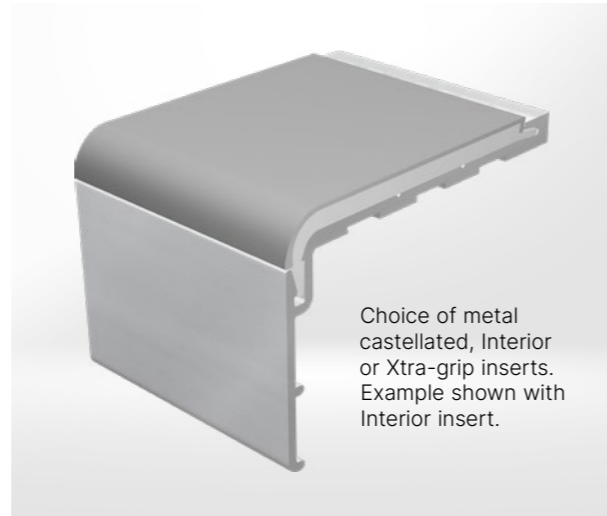
- ✔ A bright, calm and welcoming environment
- ✔ Resistance to heavy traffic
- ✔ Good slip resistance on floors
- ✔ Practical in design to facilitate building access
- ✔ Protecting walls and corners that are vulnerable to damage
- ✔ Zoning and navigation assistance

Options shown are a small selection, full colour range available on our website



Stair Edgings - XT Aluminium

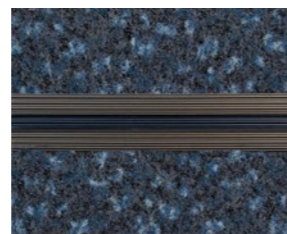
The Gradus XT range of stair edgings offers the ultimate solution in reducing slips, trips and falls on stairs.



To see the full range - [click here](#)

Barrier Matting - Esplanade 5000 & 6000

Absorbs dirt and moisture in medium to heavy levels of foot and wheeled traffic to reduce slips and maintenance costs. Available in a range of pvc or textile wipers.



Boulevard 6000 Indigo Wiper
Dark Bronze Anodised Base



Boulevard 5000 Cuckoo Wiper
Light Bronze Anodised Base



Boulevard 5000 Jackdaw Wiper
Mid Bronze Anodised Base



Pvc Scraper Wiper
Aluminium Base

Esplanade 5000 - [click here](#)

Esplanade 6000 - [click here](#)

Safety Flooring - Tarasafe Impression

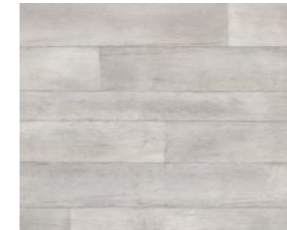
Safety flooring that is HSE 36+ PTV and R11 slip-resistant. Providing excellent stain resistance thanks to the ProtecSol Control surface treatment, the range is available in wood effect and mineral designs.



1028 Rough Beige
Y: 37.1



0519 Noma Beige
Y: 30.2



0672 Loft White
Y: 44.8

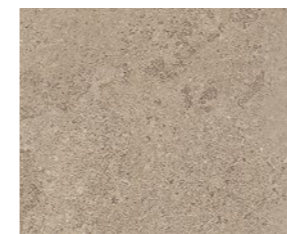


0680 Infinity Greige
Y: 33.1

To see the full range - [click here](#)

LVT Flooring - Creation 70 Dryback

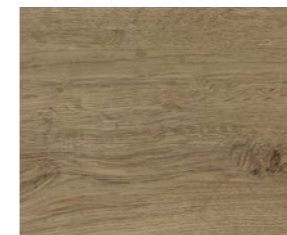
A decorative and durable range of tiles and planks with a 0.7mm wear layer; ideal for high traffic areas. Available in a range of wood and mineral designs.



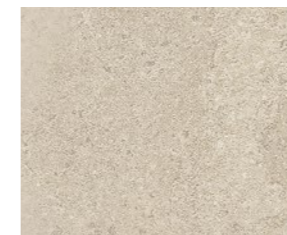
1604 Curton Stone Taupe
Y: 34.4



0456 Ranch
Y: 23.5



0503 Quartet
Y: 19.4



1603 Curton Stone Clear
Y: 53.1

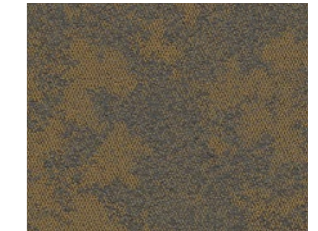
To see the full range - [click here](#)

Carpet Tiles - Lunar

Inspired by the lunar landscape the design is available in a choice of muted and neutral colourways to help create a stylish and modern environment. Contains approx 62% total recycled content.



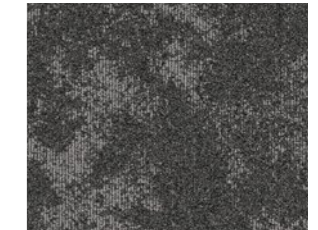
07402 Moretus
Y: 15.92



07411 Solar Yellow
Y: 9.96



07413 Astral Blue
Y: 10.01



07405 Rook
Y: 5.55

To see the full range - [click here](#)

Wall Protection

Reception areas are often subject to scuffs and scrapes from chairs and other moveable objects. Corners and edges are also vulnerable from high levels of people and wheeled traffic.








- 1 SureProtect Artworx
- 2 Timber Handrail
- 3 SureProtect Design
- 4 Standard PVC-u Corner Guard
- 5 Wall Strip

To see the full range - [click here](#)

Corridors & Hallways

Key considerations when selecting Flooring and Wall Protection for Corridors & Hallways

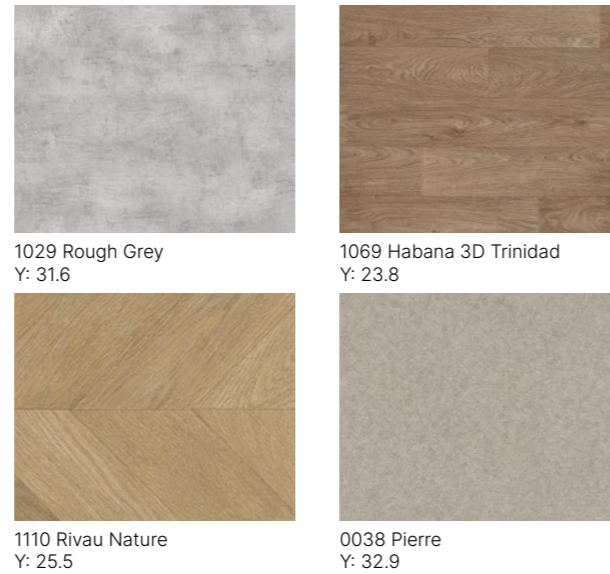
-  Selected products need to deal with heavy traffic both pedestrian and wheeled
-  Products should offer zoning and navigation assistance
-  Flooring must be slip resistant and be able to cope with heavy rolling loads
-  Robust Wall Protection system to protect vulnerable walls and corners
-  Handrails for guidance and support

Options shown are a small selection, full colour range available on our website



Safety Flooring - Tarasafe Impression

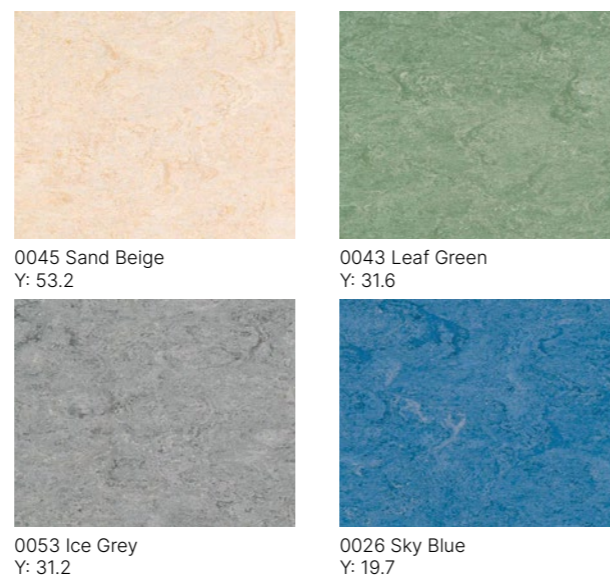
Safety flooring that is HSE 36+ PTV and R11 slip-resistant. Providing excellent stain resistance thanks to the ProtecSol Control surface treatment, the range is available in wood effect and mineral designs.



To see the full range - [click here](#)

Lino Flooring - DLW Marmorette

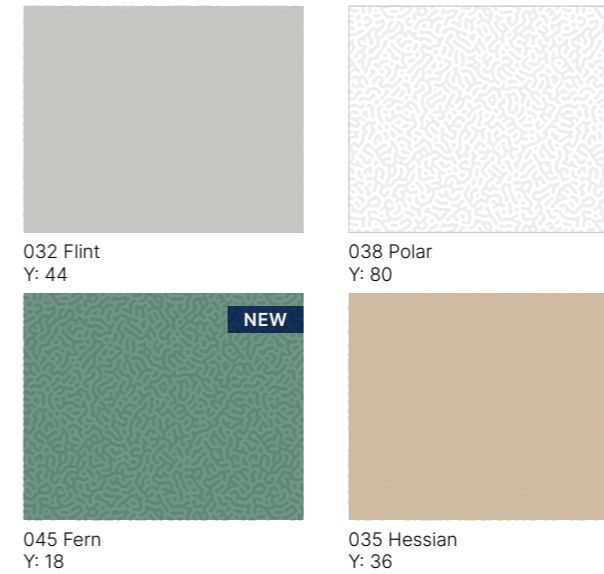
Wide range of colours to assist in wayfinding. Micro-scratch and stain resistance. Made from 98% natural materials and 76% rapidly renewable materials.



To see the full range - [click here](#)

Wall Protection - SureProtect Endure

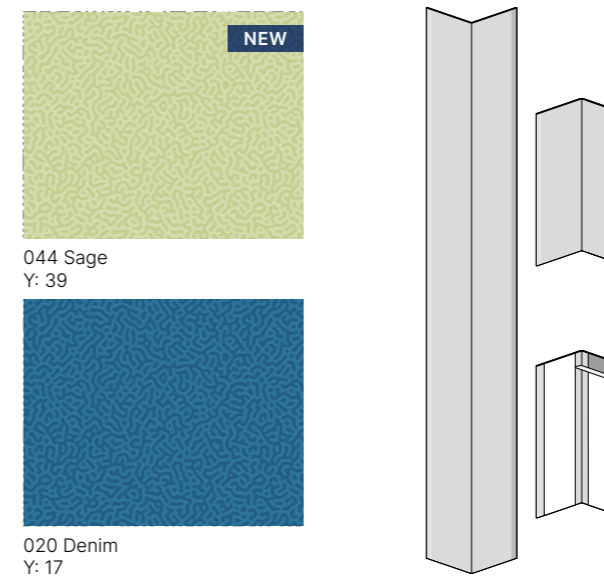
Textured PVC-u sheet protects the wall and helps to conceal the effects of impact and abrasion. Reduces the need to repair and re-paint walls.



To see the full range - [click here](#)

Wall Protection - Corner Guard

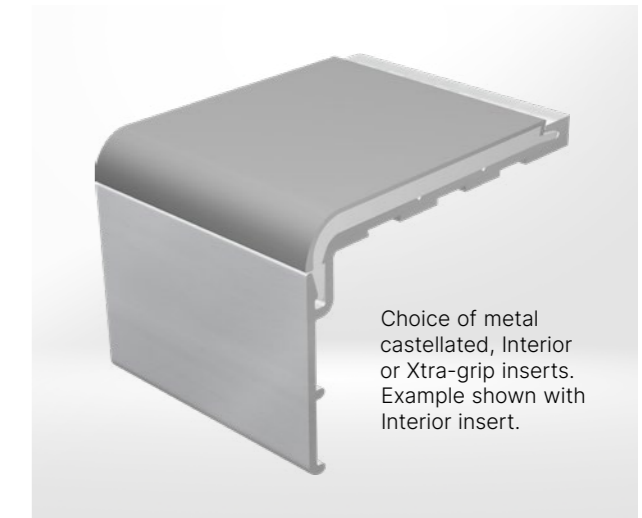
Ideal for protecting one of the most vulnerable parts of a building from damage caused by everyday traffic. Reduces maintenance costs.



To see the full range - [click here](#)

Stair Edgings - XT Aluminium

The Gradus XT range of stair edgings offers the ultimate solution in reducing slips, trips and falls on stairs.



Choice of metal castellated, Interior or Xtra-grip inserts. Example shown with Interior insert.

To see the full range - [click here](#)

Key considerations when selecting Flooring and Wall Protection for Classrooms

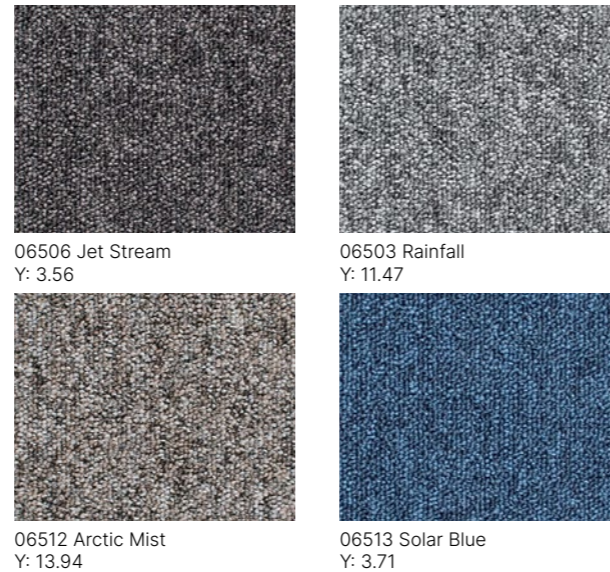
- ✔ Provide a stimulating environment for pupils to learn
- ✔ Available in an extensive colour palette, numerous designs and offer high performance for everyday use
- ✔ Easy clean and low-cost maintenance
- ✔ Robust wall protection solution to protect the building from damage and reduce maintenance costs
- ✔ Bespoke wall protection designs can help to create a custom learning environment

Options shown are a small selection, full colour range available on our website



Carpet Tiles - Stratus

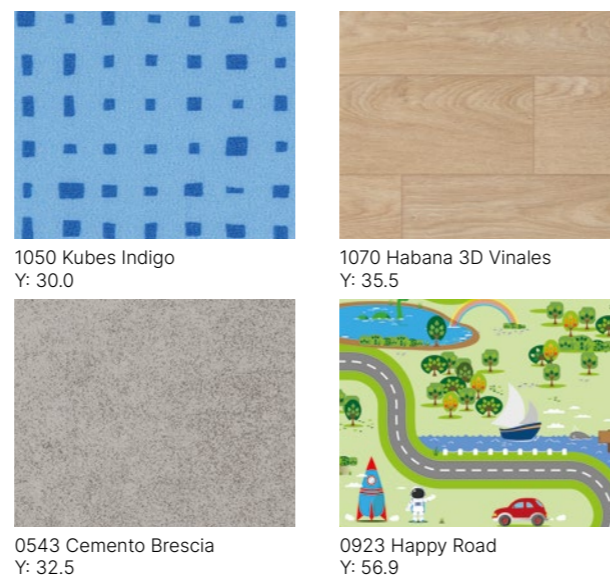
Heavy-duty carpet tiles made from Econyl Regenerated Solution Dyed Nylon. Offers 23db impact noise rating and contains approx 78% total recycled content.



To see the full range - [click here](#)

Multilayered Flooring - Taralay Impression

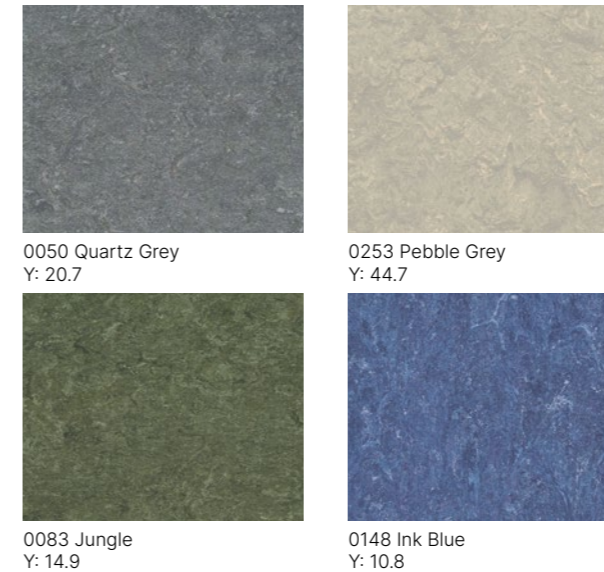
A tough, hygienic and durable flooring in a wide choice of wood, mineral, plain and graphic designs. Available in Compact, Acoustic and selected references in Looselay.



To see the full range - [click here](#)

Lino Flooring - DLW Marmorette

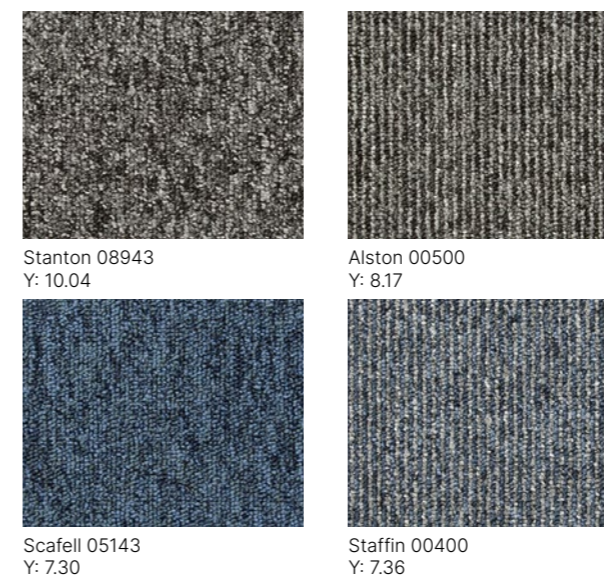
Wide range of colours to awaken any interior. Micro-scratch and stain resistance. Made from 98% natural materials and 76% rapidly renewable materials.



To see the full range - [click here](#)

Carpet Tiles - Latour 2

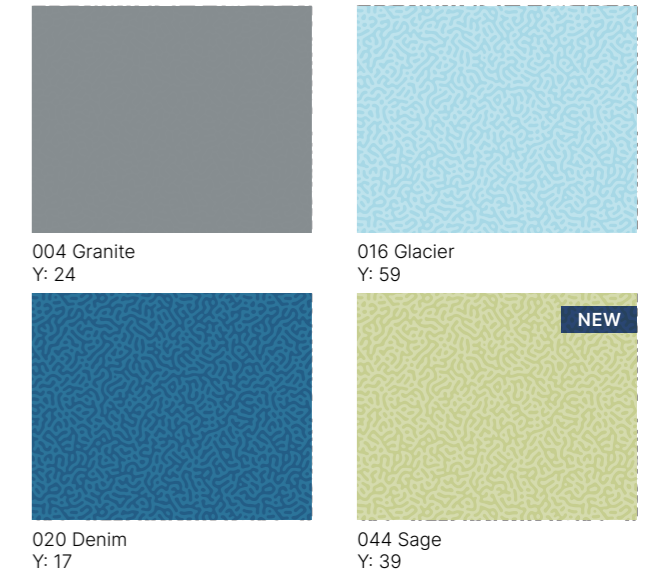
Heavy-duty carpet tiles in Plain and Stripe designs. Offers 22db impact noise rating and contains approx 66% total recycled content.



To see the full range - [click here](#)

Wall Protection - SureProtect Endure

Textured PVC-u sheet protects the wall and helps to conceal the effects of impact and abrasion. Reduces the need to repair and re-paint walls.



To see the full range - [click here](#)

Wall Protection - SureProtect Artworx

Bespoke wall cladding that digitally prints custom designs onto a durable sheet. Ideal for creating an inspiring learning environment.



To see the full range - [click here](#)

Key considerations when selecting Flooring and Wall Protection products for Sports Halls. Dedicated sport literature is also available.

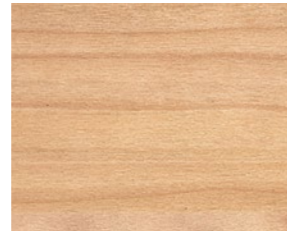
- ✓ Help reduce injuries from falls and impacts
- ✓ Good underfoot performance to eliminate sprains and strains
- ✓ Excellent resistance to rolling loads
- ✓ Suitable for both sport and non-sport usage
- ✓ Surface treatment to mean no long-term high maintenance costs
- ✓ Protection for both child and adult users of the hall
- ✓ Taraflex AE systems meet DfE guidelines

Options shown are a small selection, full colour range available on our website

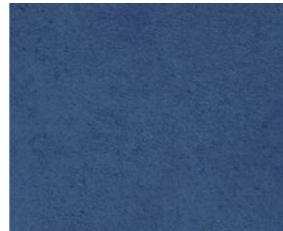


Sports Flooring - Taraflex Multi-Use

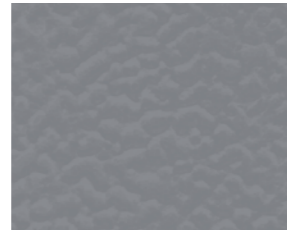
81% natural or recycled P1 sports flooring that is suitable for all types of sports and leisure activities. Excellent indentation resistance from chairs and tables.



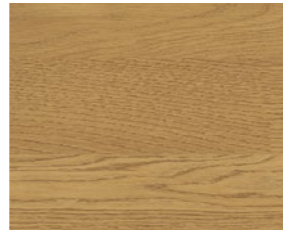
6350 Light Cherry
Y: 43.3



7762 Pure Concrete Blue
Y: 12.5



6873 Anthracite
Y: 20.5



5742 Wood Oak
Y: 26.3

To see the full range - [click here](#)

Sports Flooring - Taraflex Evolution

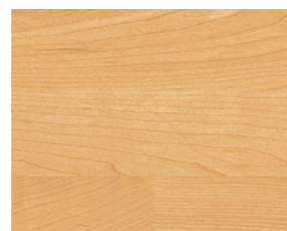
81% natural or recycled P1 sports flooring that is ideal for a variety of sports and leisure activities. Also available in sustainable looselay for adhesive-free installation.



6570 Mint Green
Y: 16.6



6379 Maple Desert
Y: 23.2



5763 Maple Sun
Y: 40.2



2404 London Light Blue
Y: 33.8

To see the full range - [click here](#)

Sports Flooring - Taraflex Systems

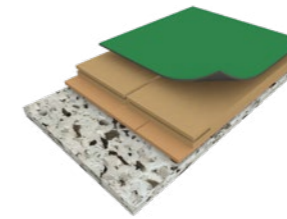
Available with a number of Taraflex finishes or DLW Linoleum to give either combined elastic or area elastic finish. Combined area elastic systems also give the benefit of impact protection and high levels of shock absorption.

All finishes with Gerflor systems benefit from surface treatments

Protexsol on Taraflex and Neocare on DLW products will offer optimised grip slide performance for players, while making the floor easy to maintain by eliminating intensive, long-term maintenance. The reduced whole life costs will be welcomed by all the stakeholders responsible for maintaining the sports floors.

Taraflex Subflex AE

- > Ideal for installations requiring a low profile / renovation projects
- > EN 14904 complaint: category A3 with <40% force reduction
- > Meets DfE technical guidance



Taraflex Subflex Combisport

- > Ideal for installations requiring a low profile / renovation projects



Taraflex AE 85

- > Adjustable height for uneven subfloors
- > EN 14904 complaint: category A4 with <55% force reduction
- > Meets DfE technical guidance



Taraflex Combisport 85

- > Ideal for installations with uneven subfloors



To see the full range - [click here](#)

Sports Flooring - Connor Sports Aspire I

Engineered real wood flooring supported by a high-performing plywood subfloor structure that provides unparalleled sport performance and shock absorption.



To see the full range - [click here](#)

Wall Protection - SureProtect Endure

Textured PVC-u sheet protects the wall and helps to conceal the effects of impact and abrasion. Reduces the need to repair and re-paint walls.



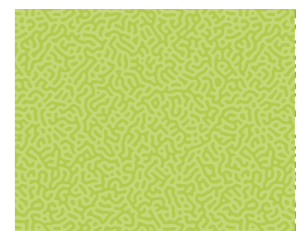
011 Pebble
Y: 59



046 Indigo
Y: 11



036 Black
Y: 5



024 Bamboo
Y: 55

To see the full range - [click here](#)

Outdoor Sports Areas

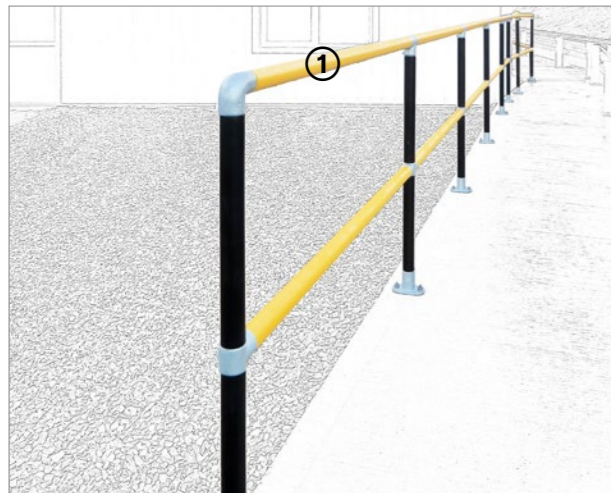
Key considerations when selecting Flooring and Wall Protection for Outdoor Sports Areas

- ✔ Improve player comfort in comparison to asphalt or concrete
- ✔ New courts can be built, in an existing space
- ✔ Retrofitted or portable courts for a tournament or an event
- ✔ Can be quickly and cost effectively installed
- ✔ Gerflor has a solution which does not require a yearly or costly refinish
- ✔ Handrails can be placed where pedestrian areas and walkways are adjacent to vehicle routes e.g. car parks

Options shown are a small selection, full colour range available on our website

Safety & Protection Systems

A modular handrail system consisting of galvanised steel rails and cast steel accessories. It is ideal for use in environments where pedestrian areas and walkways are adjacent to vehicle routes, for example, car parks, service areas and loading bays.

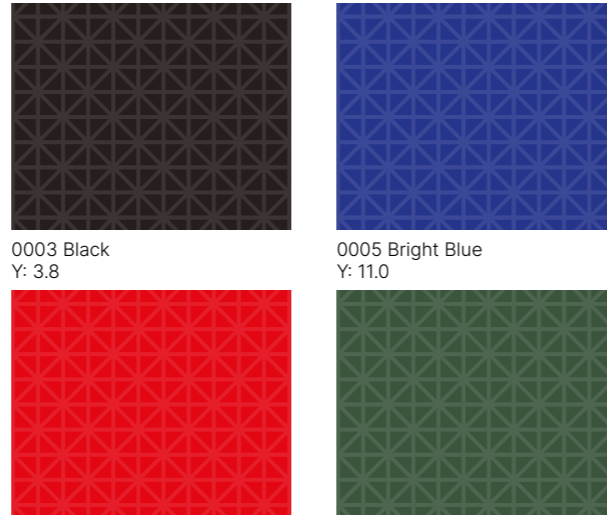


1 Handrail System

To see the full range - [click here](#)

Sports Flooring - Sport Court PowerGame Plus

PowerGame Plus tiles are safe to play on and can also be easily installed in all facilities. Build a new court, renovate an existing space or set up portable courts for a tournament or event. Designed for a wide variety of sports, this solution is an ideal outdoor playing surface for virtually any activity.



0003 Black
Y: 3.8

0005 Bright Blue
Y: 11.0

0006 Bright Red
Y: 13.4

0014 Green
Y: 12.4

To see the full range - [click here](#)



Changing Rooms

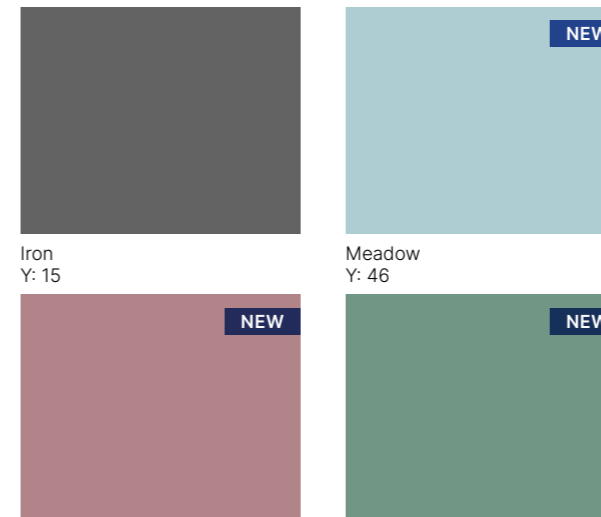
Key considerations when selecting Flooring and Wall Protection for Changing Rooms

- ✔ 2 options available that all meet HSE +36 PTV guidelines
- ✔ Good slip resistance even when wet
- ✔ Copes well with heavy traffic and provides good levels of hygiene
- ✔ Walls need to be hygienic and easy to clean
- ✔ Corners are vulnerable to damage so need protecting

Options shown are a small selection, full colour range available on our website

Wall Protection - SureProtect Pure

The smooth, easy-to-clean and maintain surface removes the need for grout which can harbour bacteria.



Iron
Y: 15

Meadow
Y: 46

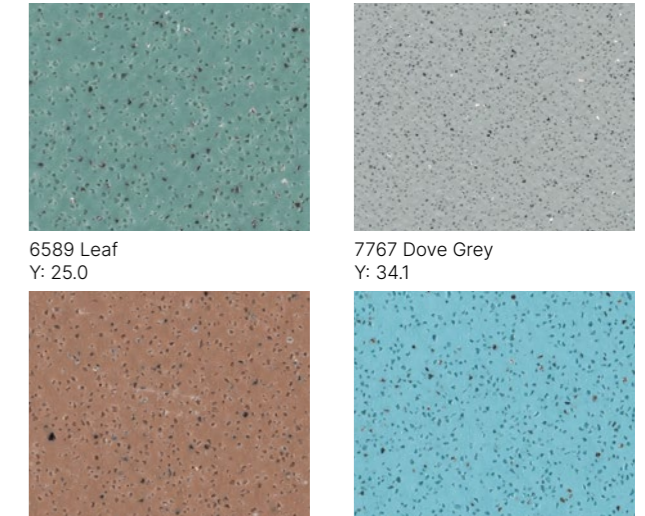
Rosewood
Y: 21

Forest
Y: 20

To see the full range - [click here](#)

Safety Flooring - Tarasafe Standard

Outstanding safety flooring where slip-resistance, durability and hygienic conditions are required, meets +36 PTV HSE guidelines.



6589 Leaf
Y: 25.0

7767 Dove Grey
Y: 34.1

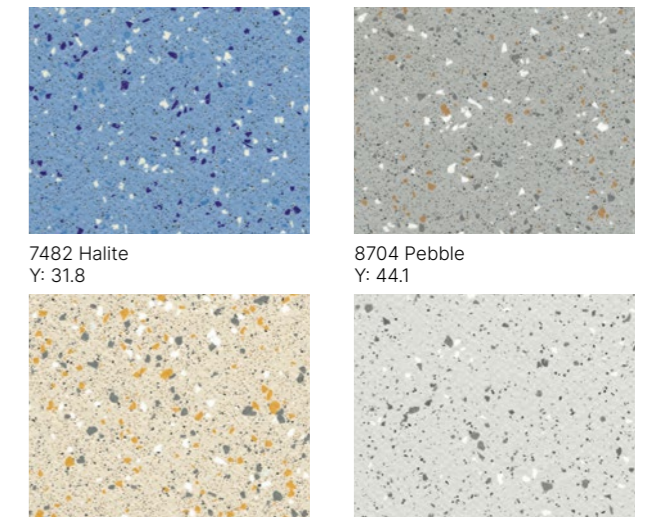
6084 Badian
Y: 20.9

6245 Atoll
Y: 41.1

To see the full range - [click here](#)

Safety Flooring - Tarasafe Ultra

Outstanding safety flooring where slip-resistance, durability and hygienic conditions are required, meets +36 PTV HSE guidelines. Available in looselay for adhesive free installation.



7482 Halite
Y: 31.8






8704 Pebble
Y: 44.1

7383 Diopside
Y: 59.6

8701 Opal
Y: 59.1

To see the full range - [click here](#)

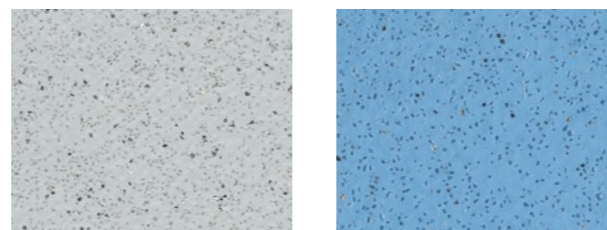
Key considerations when selecting Flooring and Wall Protection products for Toilets

-  Good slip resistance even when wet
-  Copes well with heavy traffic
-  Provides good levels of hygiene
-  Walls need to be smooth and easy to clean
-  Walls need to have an impermeable barrier to moisture and bacteria

Options shown are a small selection, full colour range available on our website

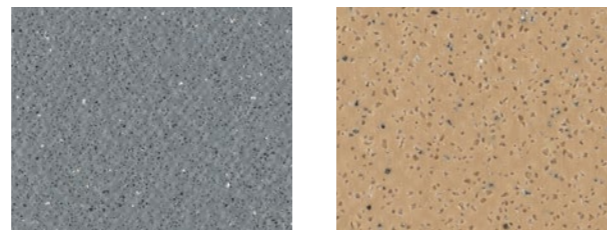
Safety Flooring - Tarasafe Standard

Outstanding safety flooring where slip-resistance, durability and hygienic conditions are required, meets +36 PTV HSE guidelines.



7731 Marbre
Y: 51.2

2430 Rain Drop
Y: 32.5



7773 Storm
Y: 21.3

7315 Jute
Y: 30.8

To see the full range - [click here](#)

Wall Protection - SureProtect Pure

The smooth, easy-to-clean and maintain surface removes the need for grout which can harbour bacteria.



White
Y: 91

Iceberg
Y: 66



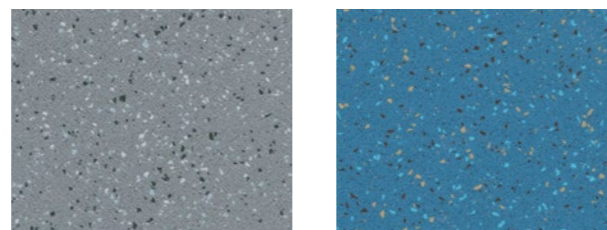
Champagne
Y: 73

Peppermint
Y: 75

To see the full range - [click here](#)

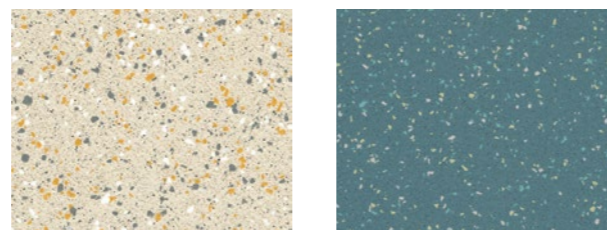
Safety Flooring - Tarasafe Ultra

Outstanding safety flooring where slip-resistance, durability and hygienic conditions are required, meets +36 PTV HSE guidelines.



8709 Granite
Y: 25.4

8420 Azurite
Y: 17.1








7383 Diopside
Y: 59.6

6593 Epidote
Y: 19.1

To see the full range - [click here](#)

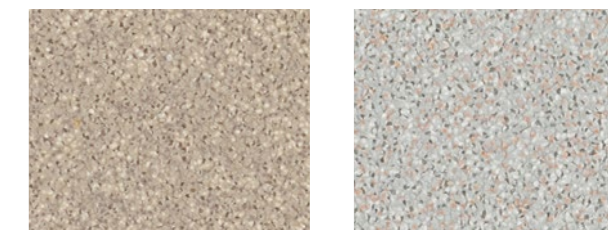
Key considerations when selecting Flooring and Wall Protection for Wet Rooms

-  Good slip resistance
-  Watertight floors and walls
-  Resistance to stains and chemicals
-  Easy clean and low-cost maintenance
-  Walls need to be smooth and easy to clean creating an impermeable barrier to moisture and bacteria

Options shown are a small selection, full colour range available on our website

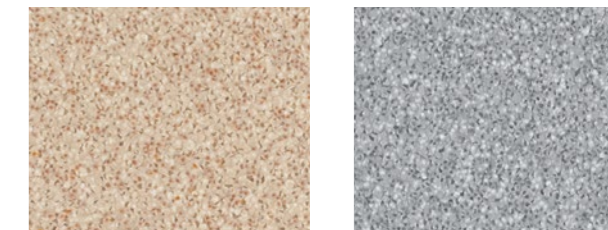
Safety Flooring - Tarasafe H2O

Stud-free high-performance slip resistant safety flooring for wet and dry, barefoot and shod applications, meets +36 PTV HSE guidelines.



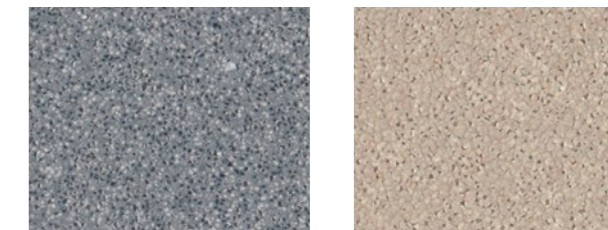
0031 Eacham
Y: 34.3

0024 Peyto
Y: 43.7



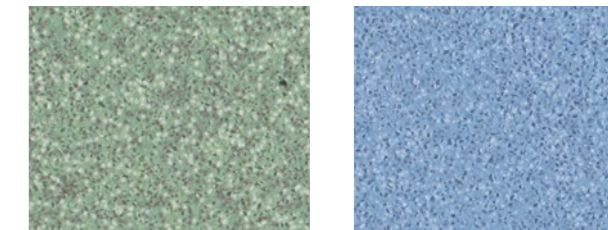
0025 Nile
Y: 43.4

0033 Rhine
Y: 29.7



0034 Zambezi
Y: 19.9

0032 Malawi
Y: 40.1



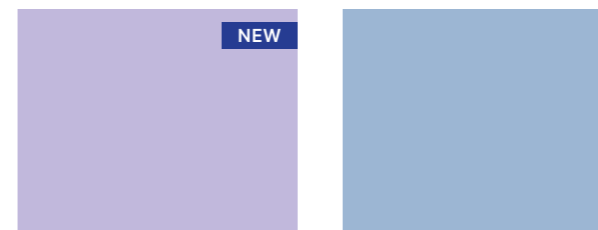
0035 Bacalar
Y: 32.5

0036 Lagoa
Y: 31.1

To see the full range - [click here](#)

Wall Protection - SureProtect Pure

The smooth, easy-to-clean and maintain surface removes the need for grout which can harbour bacteria.



Lavender
Y: 41

Blueberry
Y: 34








Putty
Y: 42

Porcelain
Y: 73

To see the full range - [click here](#)

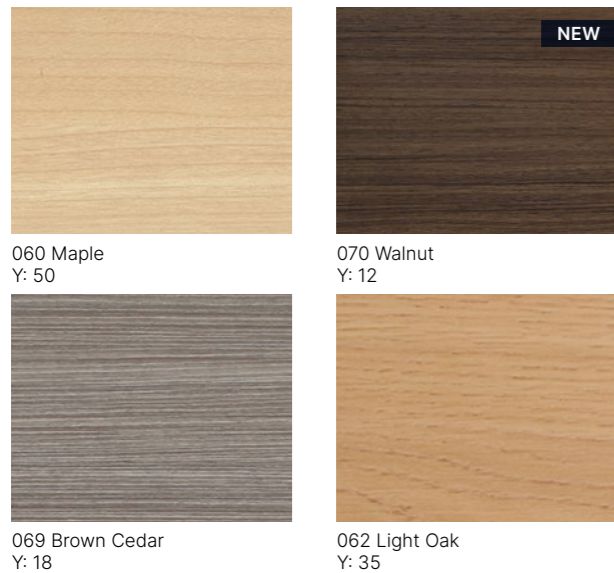
Key considerations when selecting Flooring and Wall Protection for Libraries

-  A quiet, calm and welcoming environment
-  Resistance to heavy traffic
-  Adequate sound reduction
-  Protecting walls and corners that are vulnerable to damage
-  Zoning and navigation assistance

Options shown are a small selection, full colour range available on our website

Wall Protection - SureProtect Design

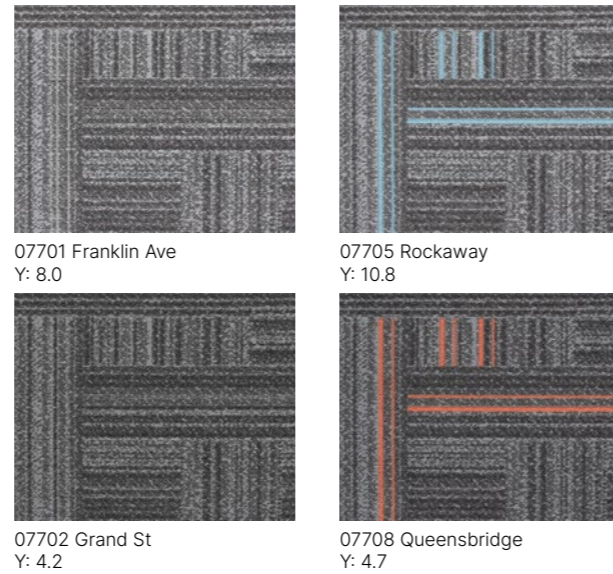
Wood-effect PVC-u wall cladding sheets that help create modern interiors whilst offering excellent surface protection.



To see the full range - [click here](#)

Carpet Tiles - Times Square

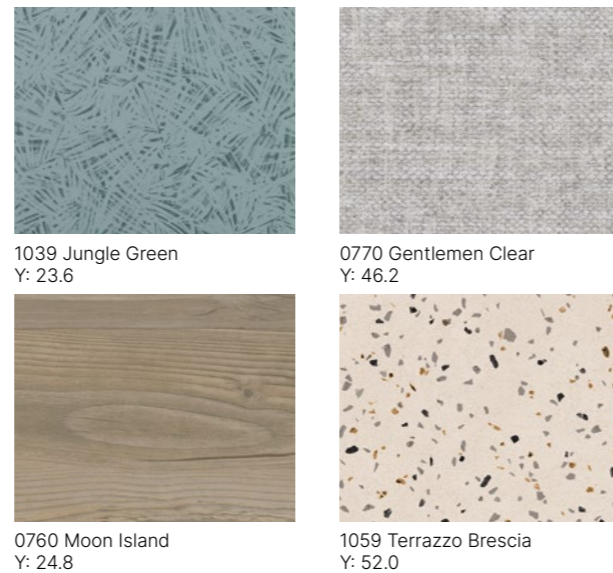
Cushion backed carpet tiles. Offering 32dB impact noise rating. Featuring 6 unique designs in each colourway for a personalised floor scheme each time.



To see the full range - [click here](#)






Multilayered Flooring - Taralay Impression Acoustic

A tough, hygienic and durable flooring in a wide choice of wood, mineral, plain and graphic designs. Offers 19db impact sound insulation.



To see the full range - [click here](#)

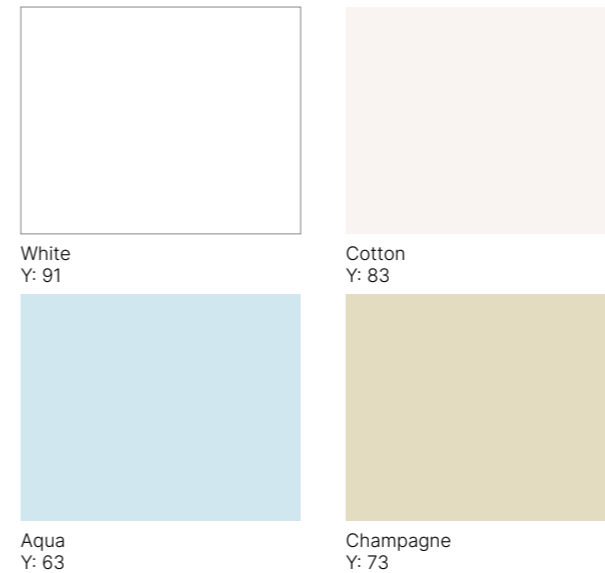
Key considerations when selecting Flooring and Wall Protection for Laboratories

-  Hygiene and infection control
-  Resistance to stains and chemicals
-  Good slip resistance
-  Quiet and comfortable underfoot
-  Easy clean and low-cost maintenance

Options shown are a small selection, full colour range available on our website

Wall Protection - SureProtect Pure

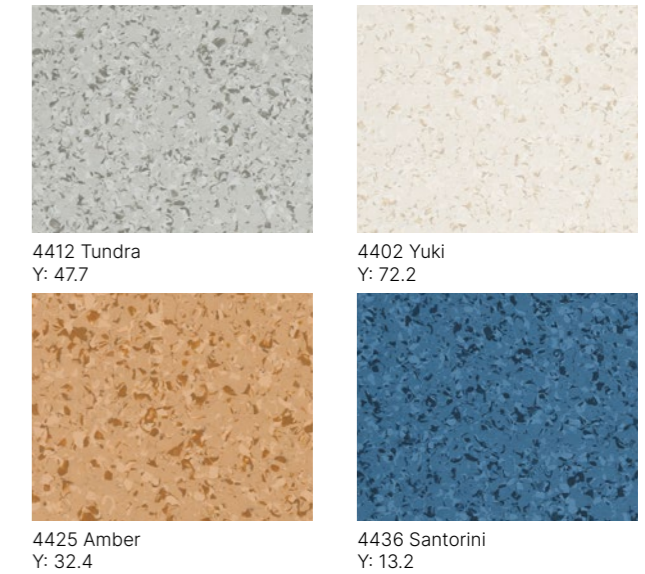
The smooth, easy-to-clean and maintain surface removes the need for grout which can harbour bacteria.



To see the full range - [click here](#)

Homogeneous Flooring - Mipolam Affinity

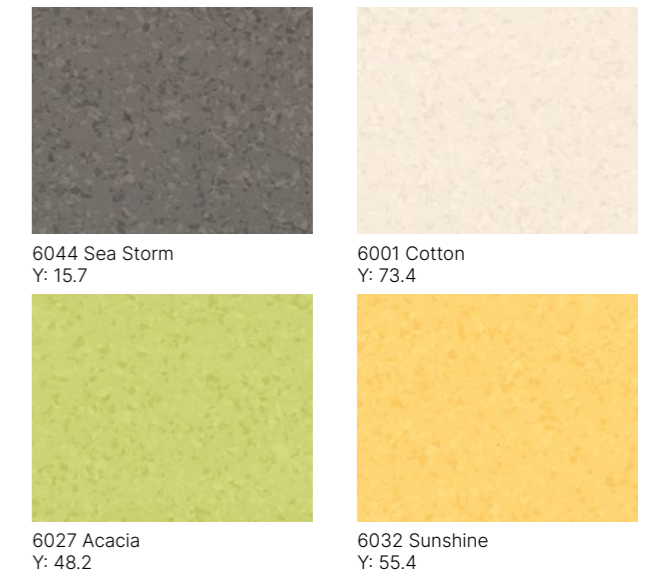
High-performance flooring with good abrasion resistance & Evercare surface treatment for easy cleaning.



To see the full range - [click here](#)

Homogeneous Flooring - Mipolam Symbioz







High-performance homogeneous flooring treated with Evercare for outstanding chemical and stain resistance. Contains 83% bio-content, mineral and recycled.



To see the full range - [click here](#)

Dining & Assembly Halls

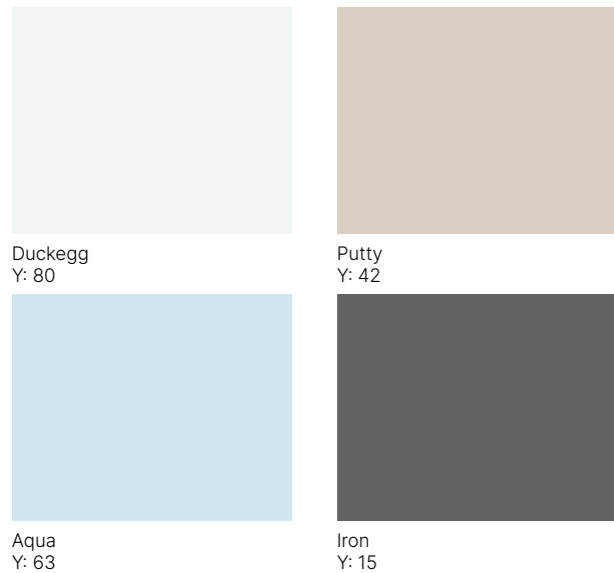
Key considerations when selecting Flooring and Wall Protection for Dining and Assembly Halls

-  Appealing and attractive
-  Good slip resistance
-  Scratch, dent and fade resistance
-  Minimal maintenance for years
-  Hygienic and easy to clean
-  Walls and corners need to be protected from scuffs and scrapes

Options shown are a small selection, full colour range available on our website

Wall Protection - SureProtect Pure

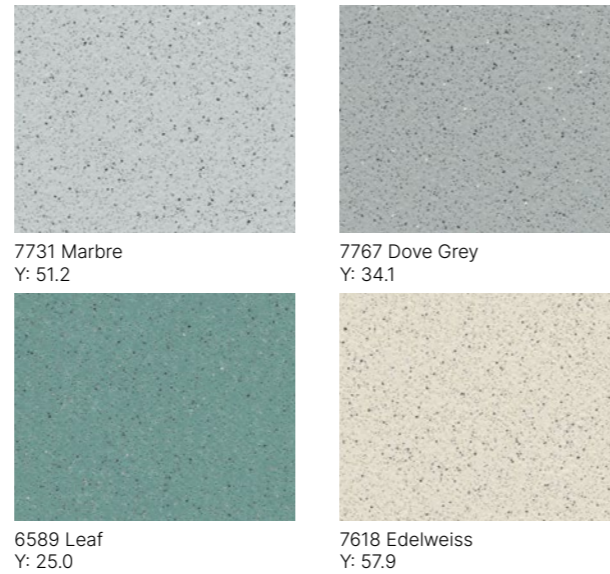
The smooth, easy-to-clean and maintain wall cladding removes the need for grout which can harbour bacteria.



To see the full range - [click here](#)

Safety Flooring - Tarasafe Standard

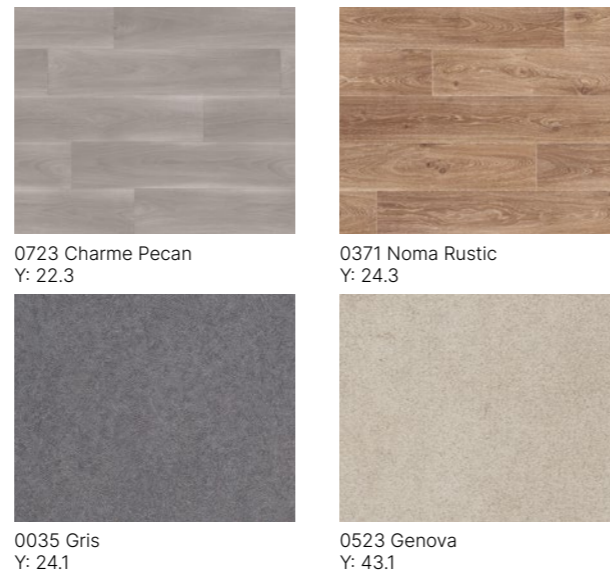
Outstanding safety flooring where slip-resistance, durability and hygienic conditions are required, meets +36 PTV HSE guidelines.



To see the full range - [click here](#)

Safety Flooring - Tarasafe Impression





A tough, hygienic and durable safety flooring that offers HSE 36+ PTV and R11 slip-resistance, available in wood effect and mineral designs.



To see the full range - [click here](#)

Kitchens

Key considerations when selecting Flooring and Wall Protection for Kitchens

-  Good slip resistance even when wet
-  Resistance to heavy traffic and rolling loads
-  Easy clean walls and low-cost maintenance
-  Smooth and impervious walls to maintain food hygiene standards

Options shown are a small selection, full colour range available on our website

Wall Protection - Wall Cladding - Stainless Steel Sheet

Robust, durable and heat resistant hygienic sheet ideal for commercial kitchens where surfaces are exposed to heat. Offered in 304 grade stainless steel in a satin finish.

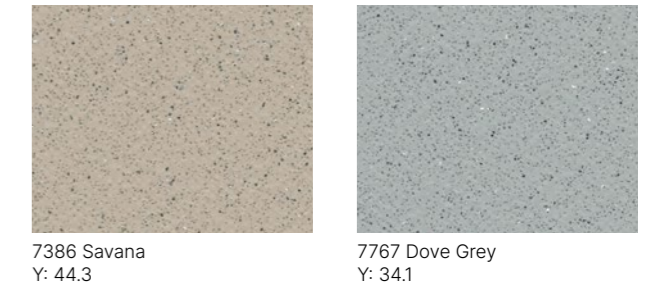


K130/SPEC, Bespoke options

To see the full range - [click here](#)

Safety Flooring - Tarasafe Super

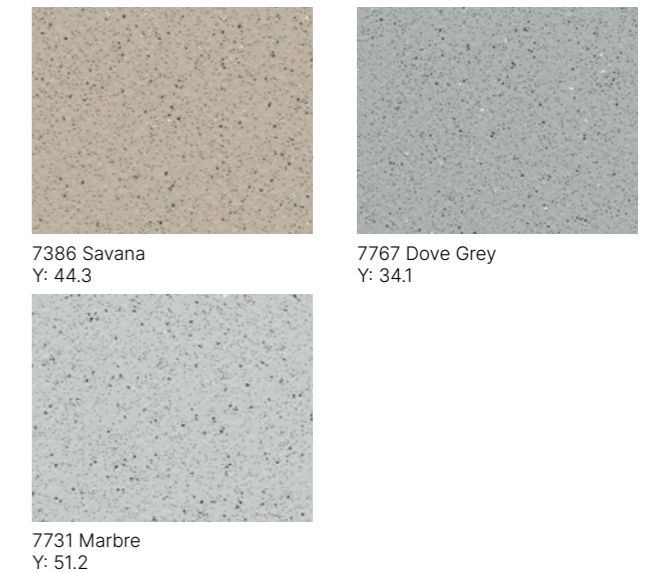
A safety flooring with R12 slip-resistance & meets +36 PTV HSE guidelines. Available with a 12 year warranty for peace of mind.



To see the full range - [click here](#)

Safety Flooring - Tarasafe Plus

A safety flooring with R10 slip-resistance. Available with a 12 year warranty.



To see the full range - [click here](#)

Mainframe Rooms

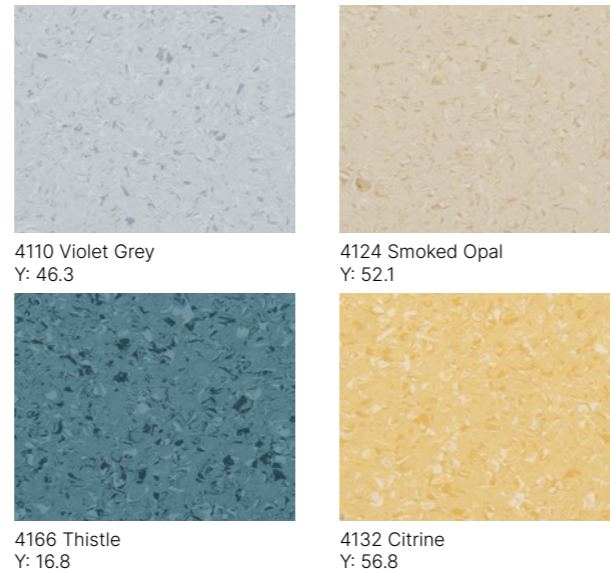
Key considerations when selecting Flooring and Wall Protection products for Mainframe Rooms

- It's important for these specialised environments that flooring is both electro-conductive and fast to install with minimal interruption to activity during the school hours
- Flooring needs to be sensitive to electrostatic discharges
- Walls and corners need to be protected from scuffs and scrapes

Options shown are a small selection, full colour range available on our website

ESD Flooring - Mipolam EL7

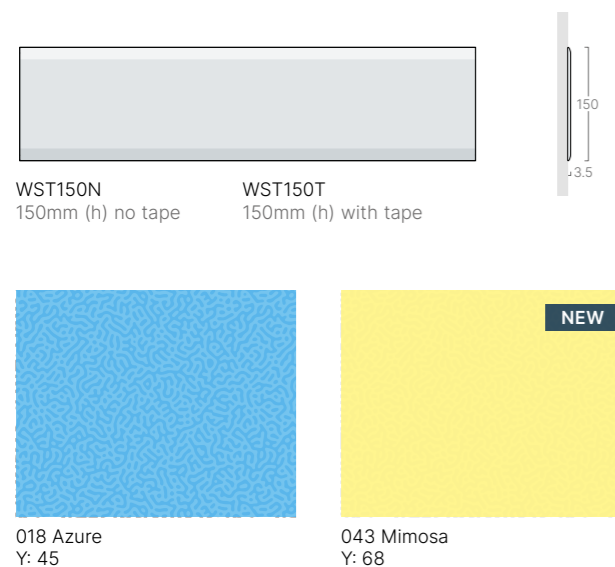
High-performance dissipative vinyl flooring treated with Evercare surface treatment for easy cleaning and maintenance. Available in Tile and Sheet format.



To see the full range - [click here](#)

Wall Protection - Wall Strip

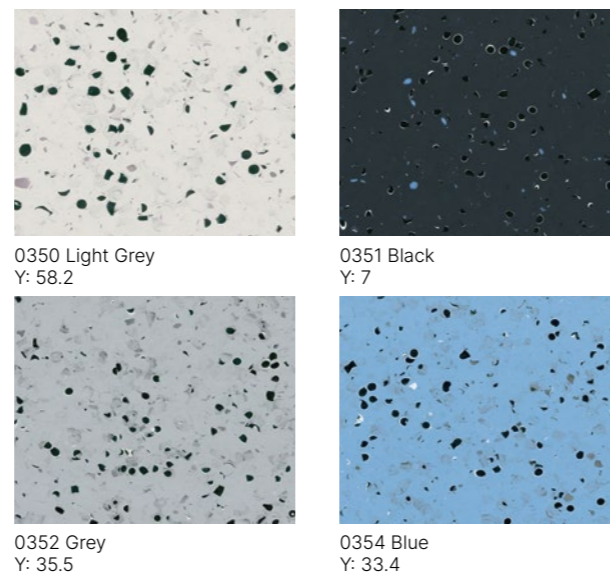
Protecting walls against scuffs, scratches and abrasion caused by chairs, tables, and other moveable objects.



To see the full range - [click here](#)

ESD Flooring - GTI EL5 Connect

A unique solution offering all the benefits of a GTI Tile. Fast dove tail installation with electro-conductivity and Evercare surface treatment.



To see the full range - [click here](#)

Computer Rooms

Key considerations when selecting Flooring and Wall Protection for Computer Rooms

- Anti-static dissipative
- Easy cleaning
- Noise reduction
- Walls and corners need protecting from scuffs and scrapes caused by tables and chairs and general movement of students

Options shown are a small selection, full colour range available on our website

ESD Flooring - Mipolam Robust EL7

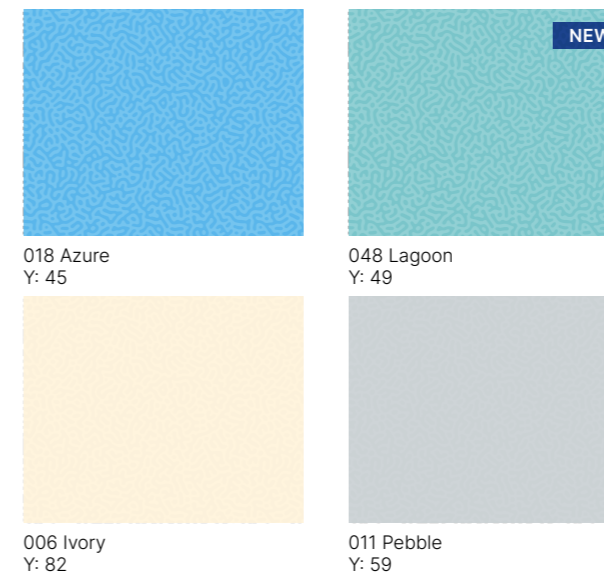
Permanent dissipative performance flooring that is available in a palette of 6 semi-directional designs. Available in Tile and Sheet format.



To see the full range - [click here](#)

Wall Protection - SureProtect Endure

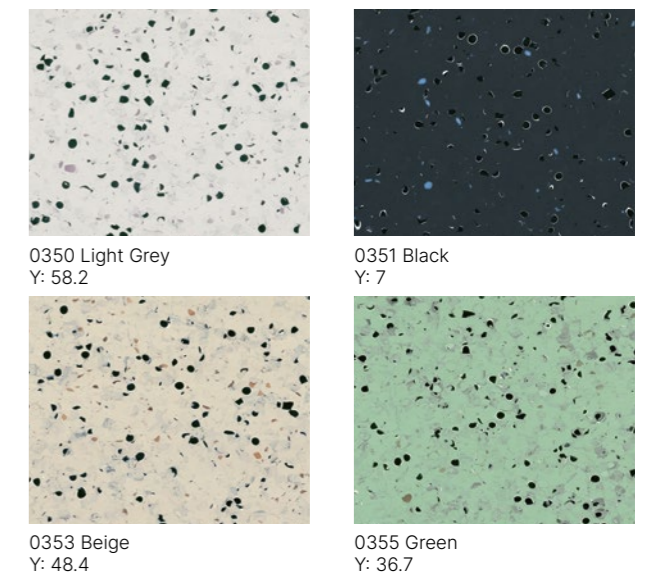
Textured PVC-u sheet protects the wall and helps to conceal the effects of impact and abrasion.



To see the full range - [click here](#)

ESD Flooring - Mipolam EL5

Permanent conductive flooring that is available in a palette of 6 colours in a non-directional design. Available in Sheet format.



To see the full range - [click here](#)

Head Teachers Office

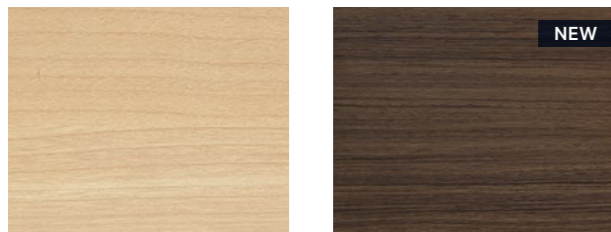
Key considerations when selecting Flooring and Wall Protection for Head Teacher Offices

- ✓ Premium solutions available for a luxurious look
- ✓ Minimises dust allergies
- ✓ Resistance to stains
- ✓ Quiet and comfortable underfoot
- ✓ Easy clean and low maintenance
- ✓ Wall cladding can be used to create a stylish environment
- ✓ Walls and corners need to be protected from scuffs and scrapes

Options shown are a small selection, full colour range available on our website

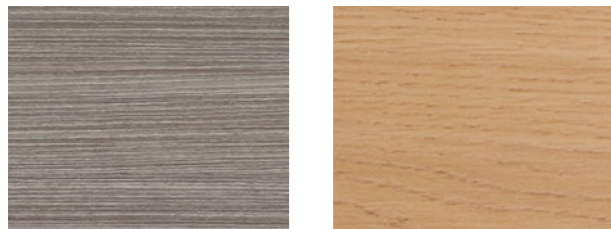
Wall Protection - SureProtect Design

Wood-effect PVC-u wall cladding sheets that help create modern interiors whilst offering excellent surface protection.



060 Maple
Y: 50

070 Walnut
Y: 12



069 Brown Cedar
Y: 18

062 Light Oak
Y: 35

To see the full range - [click here](#)

LVT Flooring - Creation 55

Exclusive realistic wood and mineral designs in planks and tiles. Micro-scratch resistant and multiple installation systems.



1606 Cedar Golden
Y: 19.1

1599 Bloom Uni Clear
Y: 45.1



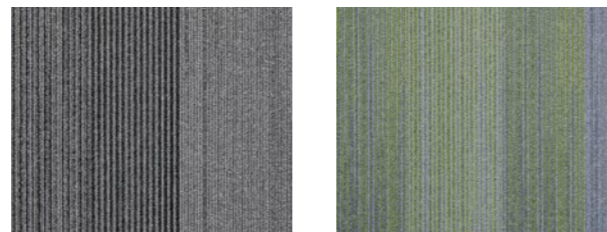
1604 Curton Stone Taupe
Y: 34.4

0504 Twist
Y: 38.9

To see the full range - [click here](#)

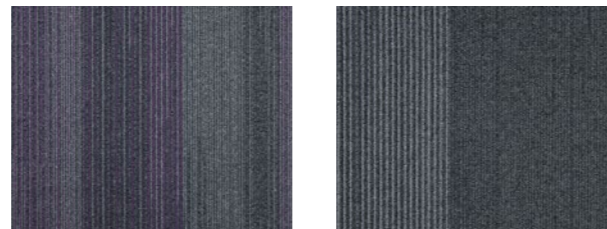
Carpet Tiles & Planks - Urban Myth

Ideal for creating transitions to design a coordinated floor scheme. Features a linear design in a choice of colourways. Contains approx 62% total recycled content.



07303 Steel
Y: 8.56

07309 Peridot
Y: 12.17



07311 Amethyst
Y: 6.51

07304 Lead
Y: 7.72

To see the full range - [click here](#)

Staff Rooms

Key considerations when selecting Flooring and Wall Protection for Staff Rooms

- ✓ Stylish flooring can instantly transform a clinical looking staff room
- ✓ Easy to clean walls and floors
- ✓ Resistance to stains and cleaning chemicals
- ✓ Walls and corners need to be protected against minor scuffs and scrapes
- ✓ Bespoke artwork on the wall can create an inspirational working environment

Options shown are a small selection, full colour range available on our website

Wall Protection - SureProtect Artworx

Bespoke wall cladding that digitally prints custom designs onto a durable sheet. Ideal for creating an uplifting space for staff.



To see the full range - [click here](#)

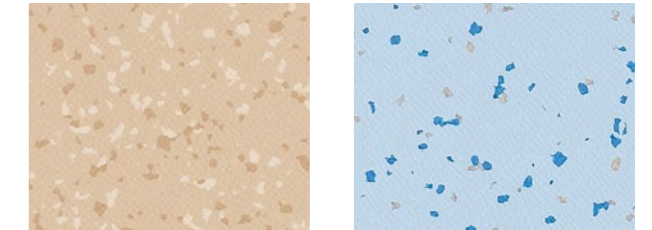
Multilayered Flooring - Taralay Premium Acoustic

Tough and durable with high acoustic performance and safe underfoot cushioning. Available as Premium Zero containing up to 97% bio-content, mineral and recycled.



4364 Ivory
Y: 61.1

9753 Energy
Y: 56.3



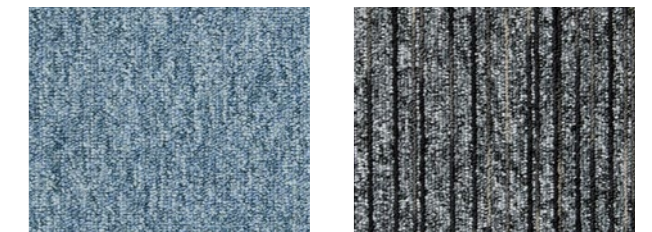
0051 Alvorada
Y: 51.5

4047 Okuza
Y: 55.3

To see the full range - [click here](#)

Carpet Tiles - Lafite Connect

Combine patterns within the Lafite Connect range to create unique designs ideal for zoning or feature areas.



Lafite Plains LC6
Y: 12.45

Lafite Space LCSPACE28
Y: 10.24



Lafite Stripes LCS18
Y: 8.16

Lafite Plains LC5
Y: 10.99

To see the full range - [click here](#)

Sensory Rooms

Key considerations when selecting Flooring and Wall Protection for Sensory Rooms

- ✓ A quiet and comfortable space with adequate sound reduction
- ✓ Available in an extensive range of colours and designs to suit various needs
- ✓ Bespoke artwork on the wall can create a soothing space
- ✓ Protecting walls and corners that are vulnerable to damage
- ✓ Lighting that can be controlled and adapted as required

Options shown are a small selection, full colour range available on our website

Wall Protection - SureProtect Artworx

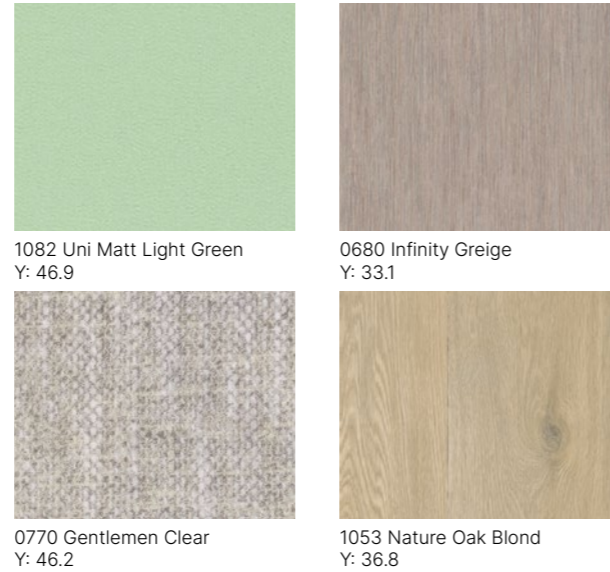
Sensory rooms are designed to offer a peaceful retreat. Enhance this space by creating a custom printed design for the walls with SureProtect Artworx.



To see the full range - [click here](#)

Multilayered Flooring - Taralay Impression Acoustic

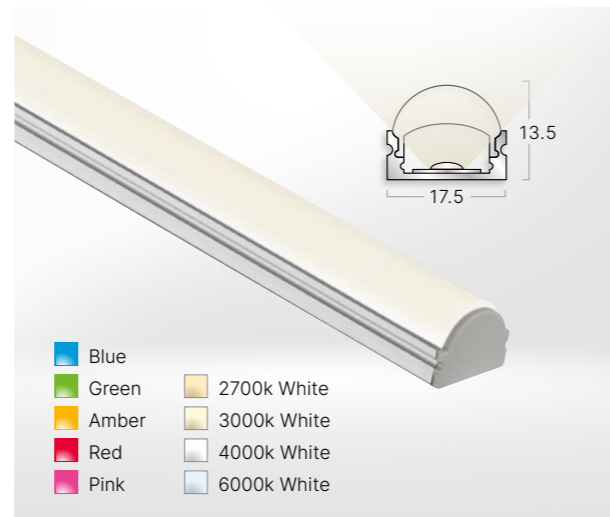
Provides 19dB impact sound insulation, ensuring quieter spaces. Available in a diverse choice of colours and designs to meet various needs.



To see the full range - [click here](#)

LED Lighting - Architectural LED Lighting

Versatile aluminium profiles and a range of Gradus Impression LED Tape colours that can be easily adjusted using control equipment to change the ambience, brightness or even colour.



To see the full range - [click here](#)

A selection of our case studies



Client: Dunfermline Learning Campus
Solution: Taraflex Performance, Tarasafe Ultra & Tarasafe Ultra H2O Safety Flooring, DLW Marmorette Linoleum, Powershock 300 Rubber Tiles, Gradus AS12 Stair Edging



Client: Park Mains High School
Solution: DLW Linoleum Range



Client: Beaulieu Convent School
Solution: Taraflex Performance, Creation 55 LVT, Tarasafe Standard, Gradus Stratus Carpet Tiles



Client: The Priory Ruskin Academy, Grantham
Solution: SureProtect Endure Wall Cladding at half height, CGS2590 Standard Corner Guards



Client: St Ninians High School, Scotland
Solution: CGS5090T Standard Corner Guards, SureProtect Endure Wall Cladding



Client: The University of Manchester
Solution: RNT718L Clear PVC-u Stair Edgings with Continuity LED Lighting in Green



DfE Documents

View our handy DfE Documents for an easy to use guide to specification in schools.



Scan the QR code to view our DfE Documents



Surface Treatment & Cleaning

Resilient flooring surface treatments can be incredibly beneficial in education environments, where cleanliness and hygiene are of the utmost importance. Gerflor Evercare, ProtecSol2, Neocare, PUR, Sparclean, ProtecSol Control and ProtecShield use antimicrobial agents in the resilient flooring, which can inhibit the growth of bacteria and other micro-organisms. This helps to create a cleaner and healthier environment for students and staff.

Additionally, these coatings make resilient flooring easier to clean, reducing the risk of cross contamination and the spread of diseases. Surface treatments also provide slip-resistance, which can help to prevent falls and injuries. This is important in areas where spills are common, such as dining halls, changing rooms and corridors.

Colour Contrast

Colour contrast and light reflectance value (LRV) are essential considerations when it comes to achieving building standards in the UK and promoting inclusive design. Colour contrast refers to the difference in colour between two adjacent surfaces, while LRV measures the amount of light a surface reflects. By using either high-contrast colours and LRVs that meet the recommended standards (30 points difference between floors and walls) or similar tonal colours (8-point difference between adjoining floor coverings), designers can create spaces that are safer and more accessible for all users. For example these factors can significantly impact how people with visual impairments navigate and perceive spaces. This approach can also help buildings meet legal requirements for accessibility, such as those outlined in the Disability Discrimination Act (DDA) and Building Regulations Part M.





2030 Targets

Aligned with these priority issues for 2026-2030, we are setting an ambitious and quantified roadmap. These include 10 key objectives that demonstrate our engagement to act on climate action, resource efficiency, circularity, our users and our employees.



Scan the QR code to view full details in our CSR report

<p>we care for climate</p> <p>-30% CO₂ scopes 1, 2, 3 in tons eq CO₂, vs 2019. Science Based Targets</p>	<p>we care for resources</p> <p>75% biobased, mineral and recycled</p>
<p>we care for circularity</p> <p>65 000 tons of waste treated</p>	<p>we care for resources</p> <p>30% recycled content</p>
<p>we care for circularity</p> <p>45% looselay</p>	<p>we care for your health and well-being</p> <p>100% of our products perform better than Indoor Air Quality standards</p>
<p>we care for people</p> <p>30% women</p>	<p>we care for your health and well-being</p> <p>95% sales covered by EPD</p>
<p>we care for people</p> <p>40% internal mobility</p>	<p>we care for people</p> <p>Towards 0 accident</p>



2030 Targets

We are setting an ambitious roadmap to reduce our carbon impact by 2030. These include 8 key objectives that demonstrate our engagement to act on climate, resource efficiency, circularity, our users and our employees.



Scan the QR code to view full details in our CSR report

<p>we care for climate</p> <p>-20% CO₂ reduction scope 1,2,3 in tons eq CO₂ vs 2019</p>	<p>we care for resources</p> <p>28% average percentage of recycled content across all our manufactured PVC products</p>
<p>we care for circularity</p> <p>35% % of stair nose activity without adhesive bond</p>	<p>we care for your health and well-being</p> <p>100% Gradus Manufactured Products covered by EPD</p>
<p>we care for circularity</p> <p>-10% waste sent for incineration</p>	<p>we care for your health and well-being</p> <p>100% REACH compliance across all our suppliers</p>
<p>we care for people</p> <p>30% internal mobility: % of open positions filled by internal candidates</p>	<p>we care for people</p> <p><4 towards 0 accident: Lost time accident per million hours worked: below 4</p>



Head Office:

Park Green,
Macclesfield,
Cheshire, SK11 7LZ

Gerflor enquiries

Tel: 01625 428922
E-mail: contractuk@gerflor.com
Website: gerflor.co.uk

Gradus enquiries

Tel: 01625 428922
E-mail: imail@gradus.com
Website: gradus.com