

IN STOCK  
NOW

# Tarasafe Standard

High performance vinyl safety flooring for heavy traffic contract applications



Compact sheet

R10

Slip Resistant

HSE 36+

Slip Resistant

20

Rtm/Rz

Roughness



Heavy traffic

T

Wear group

SparClean®

Treated



Easy to cut

SAFETY FLOORING

## A sustainable choice



100% recyclable  
29% recycled content

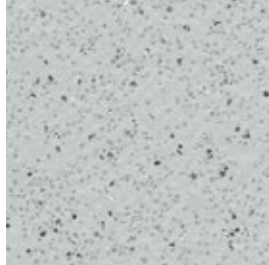


REACH

REACH compliant



VOC < 100 µg/m³



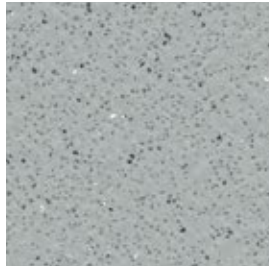
7731 Marbre

NCS: 2002-B / LRV: 51.2



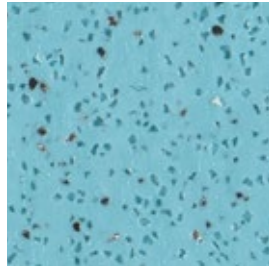
7618 Edelweiss

NCS: 1505-Y10R / LRV: 57.9



7767 Dove Grey

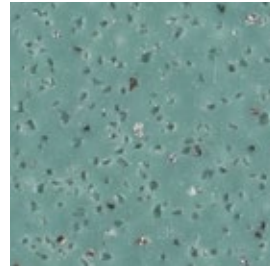
NCS: 3502-G / LRV: 34.1



6245 Atoll

NCS: 2030-B10G / LRV: 41.1

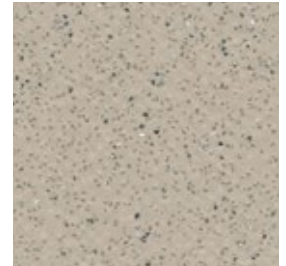
New



6589 Leaf

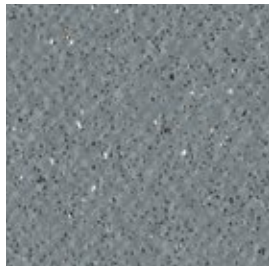
NCS: 4020-B90G / LRV: 25.0

New



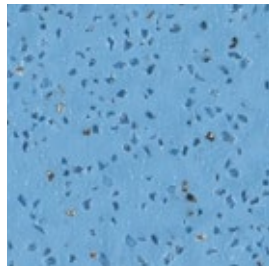
7386 Savana

NCS: 2005-Y50R / LRV: 44.3



7773 Storm

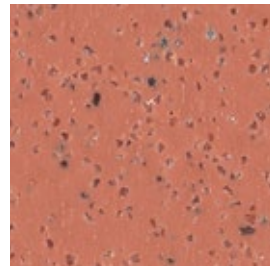
NCS: 5502-B / LRV: 21.3



2430 Rain Drop

NCS: 2040-R90B / LRV: 32.5

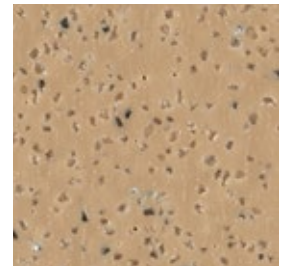
New



8102 Paprika

NCS: 3040-Y80R / LRV: 21.9

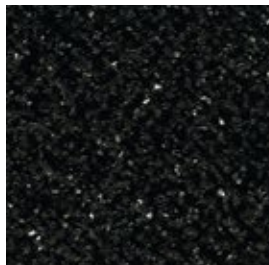
New



7315 Jute

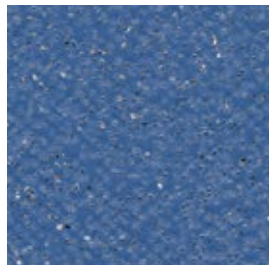
NCS: 3020-Y40R / LRV: 30.8

New



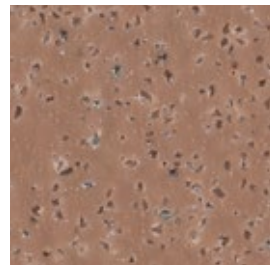
7801 Noir

NCS: 9000-N / LRV: 5.7



7709 Royal Blue

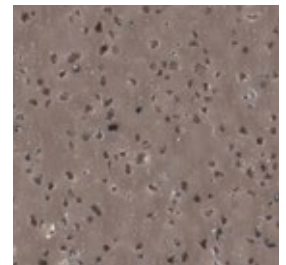
NCS: 4040-R80B / LRV: 15.3



6084 Badian

NCS: 4020-Y70R / LRV: 20.9

New



6085 Grizzly

NCS: 6005-Y80R / LRV: 19.2

New



Scan here  
for matching  
WELD RODS

NCS: Natural Colour System  
LRV: Light Reflectance Value

Gerflor®

# Tarasafe Standard

gerflor.com / follow us   



Z0014319

**Tarasafe Standard** is a hardwearing safety flooring collection that comprises of a PVC wear layer and deeply inlaid mineral crystal particles (patented). It is suitable for heavy traffic areas and is ideal for hardworking contract applications.

It delivers Safety in Numbers, with a PTV >36+ slip resistance (Dry & Wet), a R10 wet slip resistance rating and >20 Rtm/Rz surface roughness in accordance with HSE guidelines.

The revolutionary SparClean® surface treatment improves the product performance in terms of stain resistance and durability.

It contains 29% recycled content.





Anti bacterial activity against MRSA of 99% after 24h00.



A popular choice in the education, healthcare, leisure, hospitality & housing markets. Easy to clean and maintain.

## Tarasafe Standard

Description			
Total thickness	EN ISO 24346	mm	2.0
Thickness of wearlayer	EN ISO 24340	mm	0.85
Weight	EN ISO 23997	g/m <sup>2</sup>	2360
Width/Length of sheet	EN ISO 24341	cm/ml	200/20
Classification			
Norm/Product specification	-	-	EN ISO 10582
European classification	EN ISO 10874	class	34-43
Fire rating	EN 13501-1	class	Bfl-s1
Static electrical propensity	EN 1815	kV	≤ 2
Slip resistance: Pendulum Test (dry & wet)	EN 16165:2021 – Appendix C (BS 7976-2)	PTV	> 36
Surface roughness	-	µm	Rz ≥ 20
Slip resistance wet: Ramp test with oil	EN 16165:2021 – Appendix B (DIN 51130)	class	R10
Slip resistance wet: Ramp test with water	EN 16165:2021 – Appendix A (DIN 51097)	class	B
Slip resistance : Ramp test	EN 13845 (annex C)	class	ESf / ESb
Performances			
Wear resistance	EN 660.2	mm <sup>3</sup>	≤ 2
Wear Group	-	group	T
Type Binder content	EN ISO 10582	type	I
Dimensional stability	EN ISO 23999	%	≤ 0.40
Residual indentation (norm)	EN ISO 24343-1	mm	≤ 0.10
Residual indentation (average measure)	-	mm	≤ 0.05
Castor chair test (type W)	ISO 4918	-	OK
Thermal conductivity	EN ISO 10456	W/(m.K)	0.25
Colour fastness	EN ISO 105-B02	degree	≥ 6
Surface treatment	-	-	SparClean®
Chemical products resistance	EN ISO 26987	-	OK
Anti-bacterial activity (MRSA) <sup>(1)</sup>	ISO 22196	-	> 99% inhibits growth
Environment / indoor air quality			
TVOC after 28 days	ISO 16000-6	µg/m <sup>3</sup>	< 100
Certification	-	-	Floorscore®
CE marking			
		EN 14041	
			

(1) The implementation of an effective cleaning method is the best defence against infection.

Uniclass Pr_35_57_71_61			
CI / SFB			
	(43)	n6	

UK reference



Installation and Maintenance Guidelines, as well as complementary ranges available on our Gerflor website.



**IMPORTANT:** The information contained in this document is valid from 01/01/2024 and is subject to change at any time without notice. In the context of constantly changing technology, our customers are responsible, prior to any use, for checking with us that this document is the version in force. Rubber leaves indelible stains on vinyl floorings: do not use mats with rubber backing and replace tubular furniture feet with those made of PVC or polyamide. Place mats of sufficient length at entrances to reduce outside sources of dirt.

## We care / we act Our Commitments for a Sustainable future



**CARBON FOOTPRINT\***  
-20 % kg

CO<sub>2</sub> equivalent/m<sup>2</sup> between 2020 and 2025



**BIOSOURCED CONTENT\*\***  
10 % by 2025



**RECYCLED CONTENT**  
30 % by 2025



**ADHESIVE FREE\*\*\***  
35 % by 2025



**ANNUAL VOLUME RECYCLED**  
60 000 t by 2025



RC Lyon B 726 580 152 - jpe - Article code: Z0014319 - 01/2024 - Indicative documentation cost: 1.50 €

\* Scopes 1 and 2 defined in the GHG protocol \*\* % of activity with biosourced materials \*\*\* % of activity - adhesive free solution