

CLIENT:

ST MARY'S ROMAN CATHOLIC PRIMARY SCHOOL, BULWARK, CHEPSTOW

SOLUTION:

ATTRACTION

“ We needed a flooring which was robust enough to take the weight of a piano and be suitable for the variety of activities that take place in the two multi-purpose halls like PE, assemblies, after-school clubs and meetings. ”

Paul Pavia, St Mary's RC Primary School  
Chair of Governors

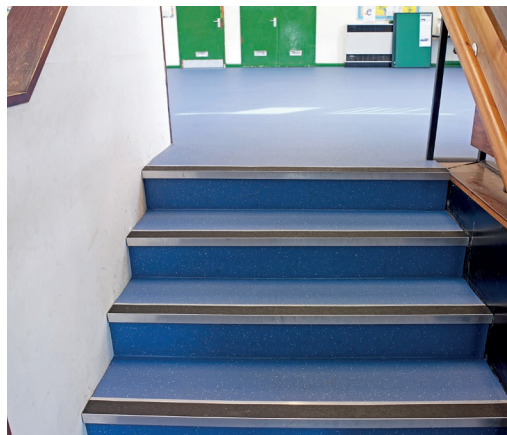
Regardless of whether the flooring installation is within a primary, secondary or further education establishment, floorings for school environments must withstand heavy use, couple technical performance with design excellence and be environmentally sustainable, dependable, safe and truly fit-for-purpose. But, essentially, they must deliver a cost-effective solution.

So, when Monmouthshire Council's St Mary's Roman Catholic (RC) Primary School in Bulwark, Chepstow, needed a new flooring to replace the old and cracked granwood flooring within two multi-purpose halls and a corresponding corridor, something suitable which was both quick to install and cost-efficient was required.



■ We were asked to provide a flooring solution to replace the existing tired, damaged granwood floor. Due to time & cost constraints, Gerflor's Attraction® tile ticked all the boxes as it could be laid directly over the existing flooring. ■

Jason Whitaker, J&H Flooring



For further information on Gerflor's extensive range of flooring solutions please contact us:

UNITED KINGDOM  
+44 (0) 1926 622 600  
contractuk@gerflor.com  
www.gerflor.co.uk

REPUBLIC OF IRELAND  
+353 (0) 42 966 1431  
gerflorirl@gerflor.com  
www.gerflor.ie

@Gerfloruk