

**IN STOCK
FOR FAST
DELIVERY**



Creation 55

LVT Essential Collection

Gerflor[®]

INTRODUCTION

Creation 55 LVT Essential Collection

The Creation 55 LVT Essential Collection consists of the most popular colourways in wood and mineral designs. The Creation 55 LVT Essential Collection now includes Herringbone formats, Dryback, Solid Clic, Rigid Acoustic and Looselay. Whatever your installation requirements are, we have a solution that is available in stock now for fast delivery.

Design inspiration

As a global manufacturer competing in world-wide markets, excellence in design is fundamental to our floorings. Headed by our Creative Director Gino Venturelli, our in-house design and research team work closely with designers from around the world, studying international design influences and identifying key trends related to the world of fashion, interior design, architecture and surface finishes.

We also draw inspiration from natural materials such as wood, stone, marble and concrete as well as graphics and architectural forms, whilst adding new colour blends and surface treatments. The results are applied to the creation of our pioneering, design-led, flooring innovations that are tailored to the individual markets we serve. The Creation LVT Essential Collection has been created using this approach to provide the ideal solution for your inspirational projects.



Herringbone design

The earliest examples of the herringbone pattern can be seen in the intricate jewellery of the ancient Egyptian elite and in fabric originating in ancient Italy. In the Roman Empire, the herringbone pattern was used in road paving systems to create extremely durable and stable thoroughfares. It has become a popular and contemporary design that is used in building interiors for a unique and distinguished finish. There are four herringbone designs within the LVT Essential Collection, perfect for your creative briefs.



QUARTET



BALLERINA



TWIST



BOSTONIAN OAK BEIGE

FORMATS

Design shade variations: Light Medium *Looselay is Brushed Emboss S001: White

Dimensions & Contents

Code	Colour Design	Dryback	Solid Clic	Rigid Acoustic	Looselay	Skirting	Coverstrip	Emboss	NCS	LRV	Pages
0447	Amador	184 x 1219	-	-	229 x 1220	S004	S004	Saw Effect*	5005-Y50R	25.1	23
0060	Arena	184 x 1219	-	-	229 x 1220	S026	S001	Saw Effect*	4005-Y20R	37.2	21
0347	Ballerina	184 x 1219 152 x 762	212 x 1239	177 x 1219 125 x 750	229 x 1220	S008	S008	Natural	4040-Y20R	28.4	9
0869	Bloom Uni Grey	610 x 610	-	-	-	S071	S071	Hammered	5005-B20G	23.2	27
0868	Bloom Uni Taupe	610 x 610	-	-	-	S072	S072	Hammered	4502-Y	28.5	26
0853	Bostonian Oak Beige	184 x 1219 152 x 762	212 x 1239	177 x 1219	-	S017	S017	Natural	4005-Y20R	36.7	11
0457	Buffalo	184 x 1219	-	-	-	S075	S001	Brushed	6010-Y10R	16.3	14
1275	Curton Stone Light Grey	457 x 914	-	-	-	S185	S185	Stone	3005-Y20R	45.9	25
0441	Honey Oak	184 x 1219	-	-	229 x 1220	S033	S033	Natural	4020-Y20R	27.7	17
0455	Long Board	184 x 1219	-	-	229 x 1220	S034	S034	Brushed	4010-Y30R	24.8	16
0448	Malua Bay	184 x 1219	-	-	229 x 1220	S035	S035	Brushed	2502-Y	47.1	18
0461	Michigan	184 x 1219	-	-	-	S038	S038	Brushed	6020-Y30R	13.5	12
0061	Oxford	184 x 1219	-	-	-	S043	S001	Brushed	5502-Y	19.2	24
0503	Quartet	184 x 1219 152 x 762	212 x 1239	177 x 1219 125 x 750	-	S056	S056	Natural	5020-Y20R	19.4	8
0456	Ranch	184 x 1219	-	-	229 x 1220	S053	S053	Brushed	5005-Y50R	23.5	20
0436	Riverside	610 x 610	-	-	-	S032	S032	Hammered	6502-Y	16.7	28
0445	Rustic Oak	184 x 1219	-	-	-	S062	S062	Natural	4030-Y20R	20.4	13
0796	Swiss Oak Golden	184 x 1219	-	-	229 x 1220	S015	S015	Natural	4030-Y20R	25.8	15
0846	Swiss Oak Pearl	184 x 1219	-	-	229 x 1220	S014	S014	Natural	3502-Y	36.1	22
0504	Twist	184 x 1219 152 x 762	212 x 1239	177 x 1219	229 x 1220	S039	S039	Natural	3010-Y30R	38.9	10
0584	White Lime	184 x 1219	-	-	-	S074	S074	Saw Effect	4005-Y20R	36.0	19

Technologies

Dryback

- Ideal for new build
- Largest choice of designs: mix & match

Solid Clic

- Exclusive Clic - ideal for renovation
- Acoustic and walking comfort

Rigid Acoustic

- Ideal for heavy renovation
- Integrated acoustic backing

Looselay

- Removable installation, ideal for raised access floors
- Mix & match Designs

Contact us for further information

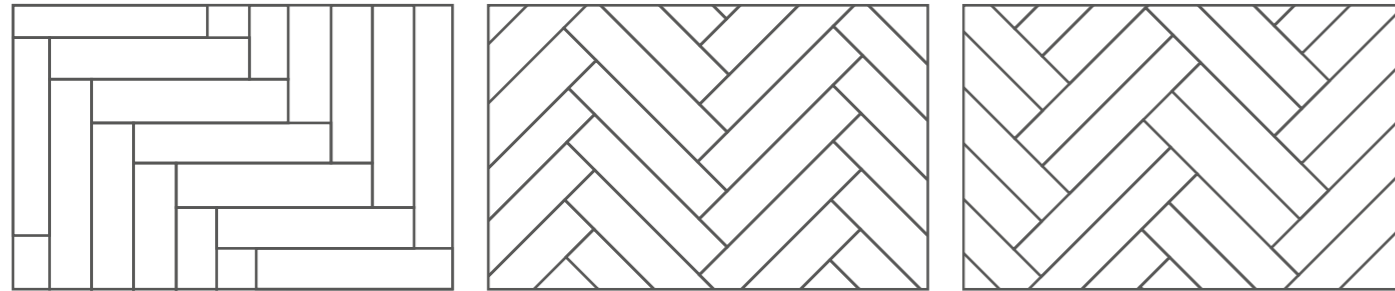
UNITED KINGDOM:
Tel: +44 (0) 1625 428 922
E-mail: contractuk@gerflor.com
Visit: www.gerflor.co.uk

IRELAND:
Tel: +353 (0) 42 966 1431
E-mail: gerflorirl@gerflor.com
Visit: www.gerflor.ie

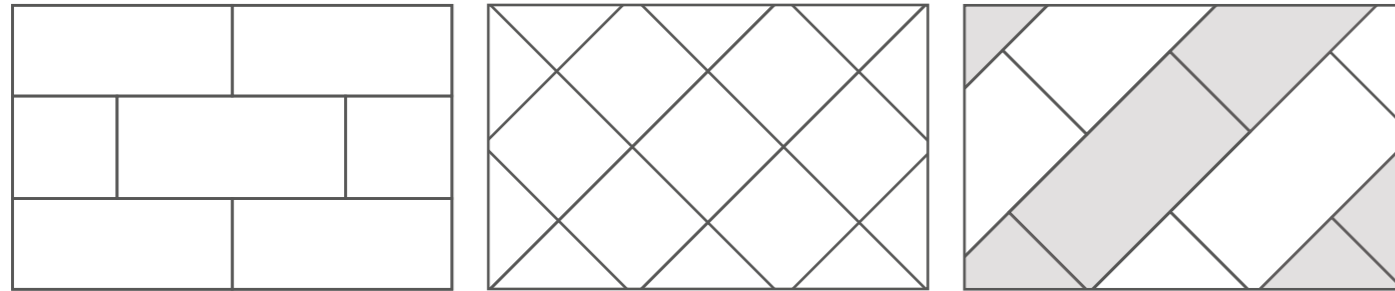


DESIGN OPTIONS & EMBOSSES

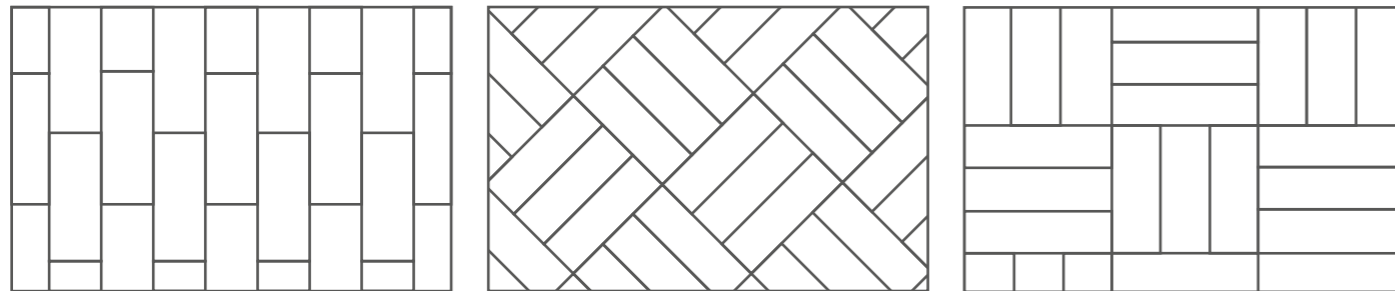
Laying patterns



Herringbone

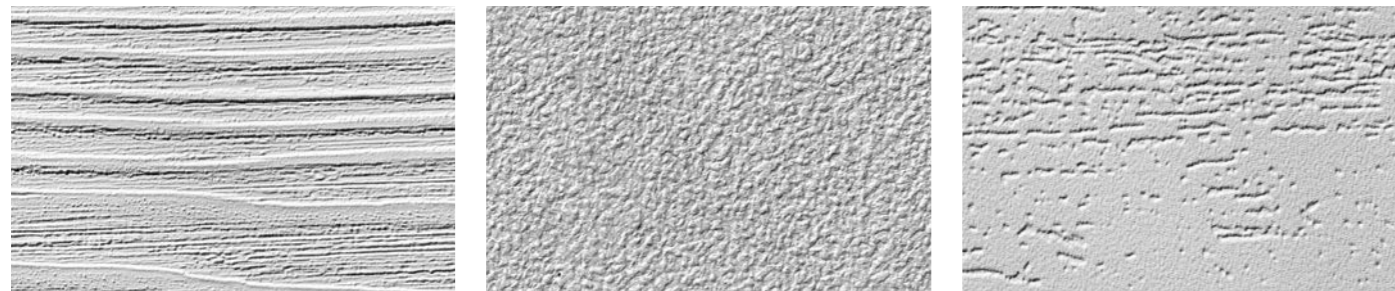


Stone



Wood

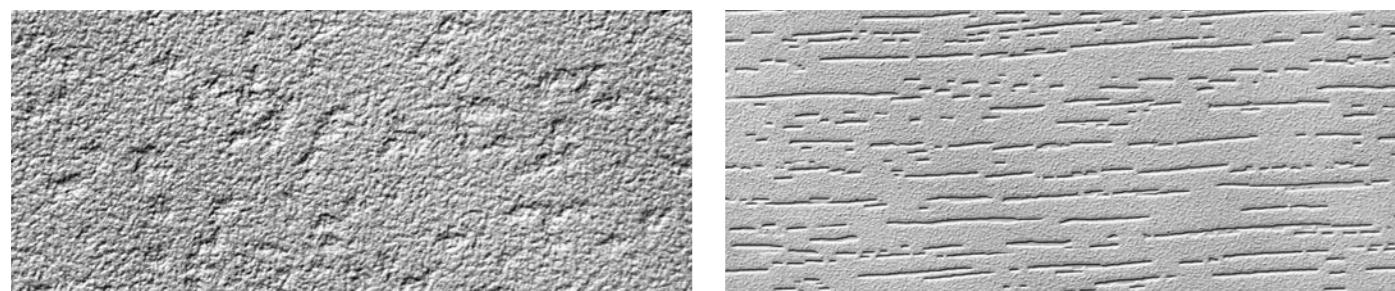
Exclusive embosses



Brushed

Stone

Saw Effect



Hammered

Natural

Enhanced durability

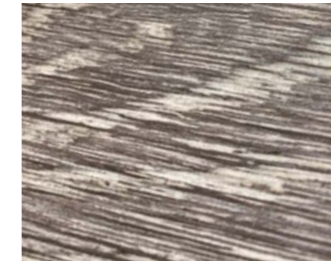
Ultra matt finish



Micro scratch resistance
Microscopic view (x5)



Standard varnish



Creation



Easy to clean & maintain



Ease of maintenance

Fouling after cleaning



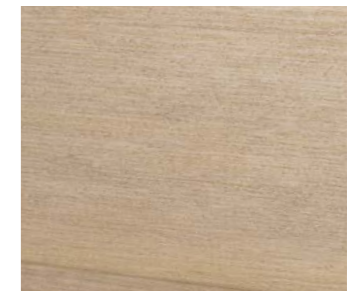
Standard varnish

Maintenance guidelines available on gerflor.co.uk / gerflor.ie

Gloss level (60° test)



Standard varnish



Unchanged visual aspect



Creation

CREATION 55

LVT Essential Collection



0503
QUARTET | DB: 184 × 1219 | DB HB: 152 × 762 | SC: 212 × 1239 | RA: 177 × 1219 | RA HB: 125 × 750



0347
BALLERINA | DB: 184 × 1219 | DB HB: 152 × 762 | SC: 212 × 1239 | RA: 177 × 1219 | RA HB: 125 × 750 | LL: 229 × 1220



0504
TWIST | DB: 184 × 1219 | DB HB: 152 × 762 | SC: 212 × 1239 | RA: 177 × 1219 | LL: 229 × 1220



0853
BOSTONIAN OAK BEIGE | DB: 184 × 1219 | DB HB: 152 × 762 | SC: 212 × 1239 | RA: 177 × 1219



0461
MICHIGAN | DB: 184 × 1219



0445
RUSTIC OAK | DB: 184 × 1219



0457
BUFFALO | DB: 184 × 1219



0796
SWISS OAK GOLDEN | DB: 184 × 1219 | LL: 229 × 1220



0455
LONG BOARD | DB: 184 × 1219 | LL: 229 × 1220



0441
HONEY OAK | DB: 184 × 1219 | LL: 229 × 1220



0448
MALUA BAY | DB: 184 × 1219 | LL: 229 × 1220



0584
WHITE LIME | DB: 184 × 1219



0456
RANCH | DB: 184 × 1219 | LL: 229 × 1220



0060
ARENA | DB: 184 × 1219 | LL: 229 × 1220



0846
SWISS OAK PEARL | DB: 184 × 1219 | LL: 229 × 1220



0447
AMADOR | DB: 184 × 1219 | LL: 229 × 1220



0061
OXFORD | DB: 184 × 1219



1275
CURTON STONE LIGHT GREY | DB: 457 × 914



0868
BLOOM UNI TAUPE | DB: 610 × 610



0869
BLOOM UNI GREY | DB: 610 × 610



0436
RIVERSIDE | DB: 610 × 610

DESIGN SHADE VARIATION

KEY



Light



Medium

DB
Dryback
Installation

LL
Looselay
Installation

SC
Solid Clic
Installation

DB HB
Dryback
Herringbone

RA
Rigid Acoustic
Installation

RA HB
Rigid Acoustic
Herringbone

0503 QUARTET

DB 184 × 1219 | SC 212 × 1239 | RA 177 × 1219 | DB HB 152 × 762 | RA HB 125 × 750



0503 QUARTET
LRV: 19.4



0347 BALLERINA

DB 184 × 1219 | SC 212 × 1239 | RA 177 × 1219 | LL 229 × 1220 | DB HB 152 × 762 | RA HB 125 × 750



0347 BALLERINA
LRV: 28.4



0504 TWIST

DB 184 x 1219 | SC 212 x 1239 | RA 177 x 1219 | LL 229 x 1220 | DB HB 152 x 762



0504 TWIST
LRV: 38.9



0853 BOSTONIAN OAK BEIGE

DB 184 x 1219 | SC 212 x 1239 | RA 177 x 1219 | DB HB 152 x 762



0853 BOSTONIAN OAK BEIGE
LRV: 36.7



0461 MICHIGAN

DB
184 x 1219



0461 MICHIGAN
LRV: 13.5



0445 RUSTIC OAK

DB
184 x 1219



0445 RUSTIC OAK
LRV: 20.4



0457 BUFFALO

DB
184 × 1219



0457 BUFFALO
LRV: 16.3



0796 SWISS OAK GOLDEN

DB | LL
184 × 1219 | 229 × 1220



0796 SWISS OAK GOLDEN
LRV: 25.8



0455 LONG BOARD

DB 184 × 1219 | LL 229 × 1220



0455 LONG BOARD
LRV: 24.8



0441 HONEY OAK

DB 184 × 1219 | LL 229 × 1220



0441 HONEY OAK
LRV: 27.7



0448 MALUA BAY

DB 184 x 1219 | LL 229 x 1220



0448 MALUA BAY
LRV: 47.1



0584 WHITE LIME

DB 184 x 1219



0584 WHITE LIME
LRV: 36.0



0456 RANCH

DB 184 x 1219 | LL 229 x 1220



0456 RANCH
LRV: 23.5



0060 ARENA

DB 184 x 1219 | LL 229 x 1220



0060 ARENA
LRV: 37.2



0846 SWISS OAK PEARL

DB 184 x 1219 | LL 229 x 1220



0846 SWISS OAK PEARL
LRV: 36.1



0447 AMADOR

DB 184 x 1219 | LL 229 x 1220



0447 AMADOR
LRV: 25.1



0061 OXFORD

DB
184 x 1219



0061 OXFORD
LRV: 19.2



1275 CURTON STONE LIGHT GREY

DB
457 x 914

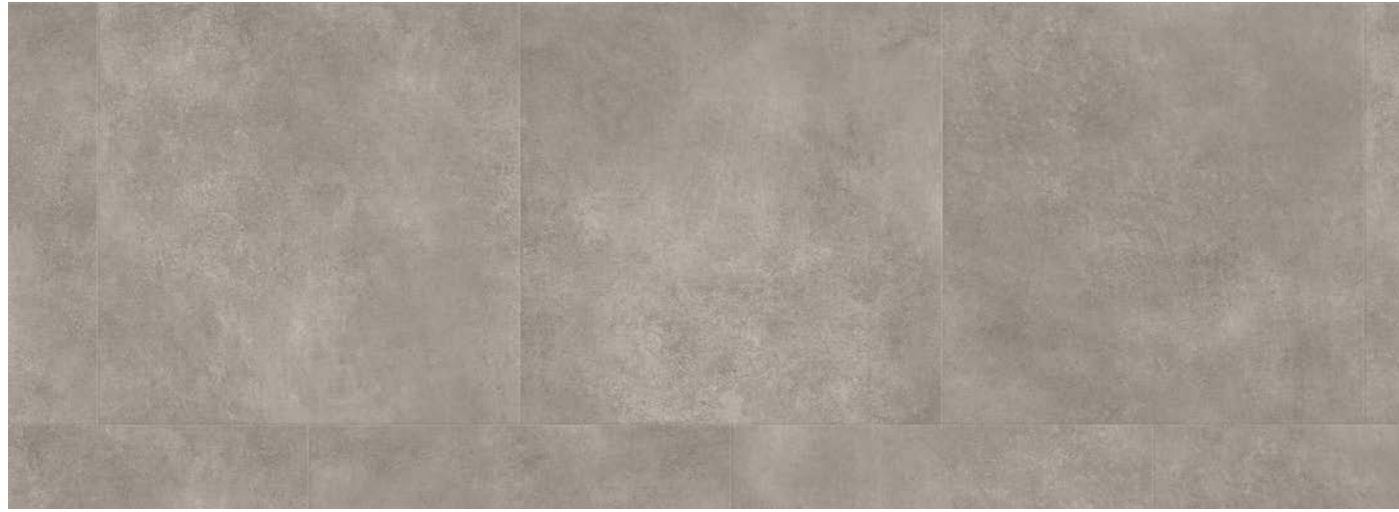


1275 CURTON STONE LIGHT GREY
LRV: 45.9



0868 BLOOM UNI TAUPE

DB
610 × 610



0868 BLOOM UNI TAUPE
LRV: 28.5

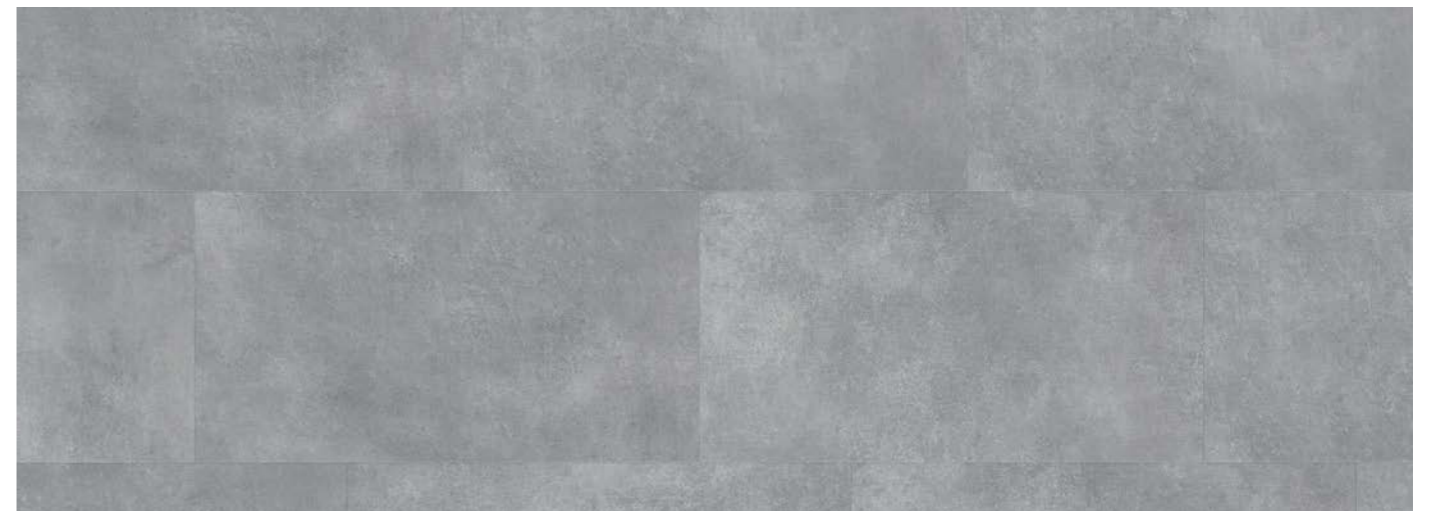


0869 BLOOM UNI GREY

DB
610 × 610



0869 BLOOM UNI GREY
LRV: 23.2



0436 RIVERSIDE

DB
610 x 610



0436 RIVERSIDE
LRV: 16.7



ACCESSORIES

More than a floor...
Underlayer*

Creation Solid Clic

Acoustic 15dB



Code: 1798
Format: 1m x 15lm

Acoustic Plus 19dB



Code: 0704
Format: 0.98m x 15.3lm

Silence Plus 19dB



Code: 5949
Format: 1.18m x 8.5lm

Smart Fix 16dB



Code: 1698
Format: 1m x 7.5lm

Creation Dryback

Design skirting*



Vinyl Skirting: 6086 + Color code / MDF Skirting: 5947 + Color code



White Skirting - can be painted over

Vinyl Code: 6086 S001
MDF Code: 5947S001

Design coverstrip*

Format: 45mm x 0.90m



Code: 0647 + Colour code
Available colours on gerflor.co.uk

Format: 45mm x 0.90m



Code: 0647 S001

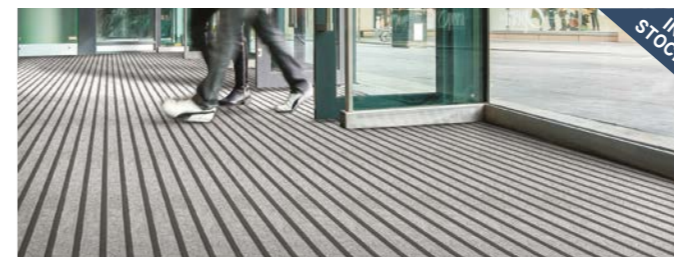
3 uses



1. Expansion gap
2. Ramp
3. Threshold

Gradus Barrier matting systems

Mat-in-a-Box 1550



Gradus accessories also available, visit gradus.com for further information.

Mat-in-a-Box 5000 & 6000*



*Subject to lead times.

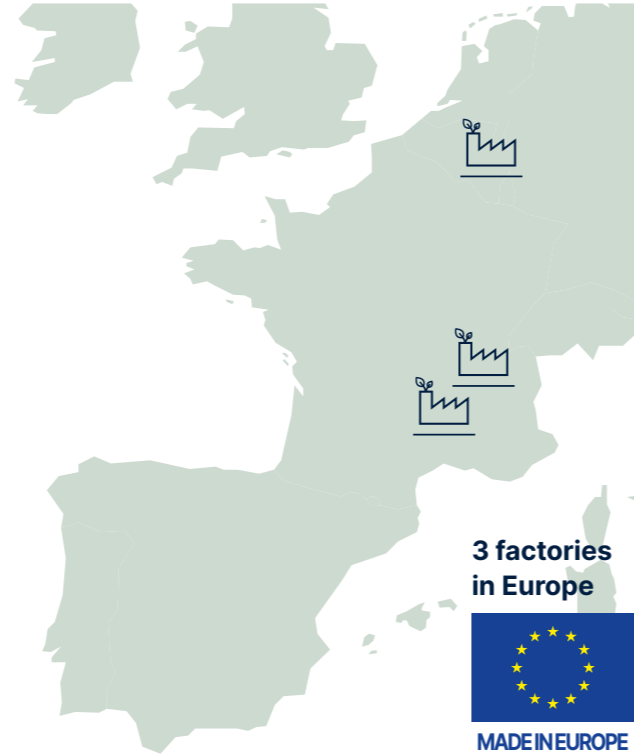
SUSTAINABILITY

Creation, the reference in sustainability



Carbon footprint

- Manufacturing Footprint in Europe
- ISO 9001, 14001 & 50001 certifications
- Renewable energy



Circularity

- 100% recyclable products
- Up to 55% recycled content
- Adhesive free solutions
- Packaged using 100% recycled cardboard



Health and safety

- 100% Reach compliant
- Phthalate free*
- Formaldehyde free
- Indoor Air Quality: TVOC <10 µg/m³ after 28 days

*Except recycled content



we care / we act

All Gerflor sites certified

ISO 9001
(QUALITY)

ISO 14001
(ENVIRONMENT)

ISO 50001
(ENERGY)

TECHNICAL

Creation 55 LVT Essential Collection

	Dryback	Solid Clic	Rigid Acoustic	Looselay
--	---------	------------	----------------	----------

DESCRIPTION

Total Thickness	EN ISO 24346	mm	2.50	5.00	6.00	4.50
Thickness of the wearlayer	EN ISO 24340	mm	0.55	0.55	0.55	0.55
Weight	EN ISO 23997	g/m ²	3 850	7 781	9 480	7 500
Format / Size	ISO 24342	mm	184 × 1219 mm - 15 planks / 3.36 m ² 610 × 610 mm - 9 tiles / 3.35 m ² 457 × 914 mm - 9 tiles / 3.76 m ²	212 × 1239 mm - 7 planks / 1.84 m ²	125 × 750 mm - 16 planks / 1.50 m ² 177 × 1219 mm - 8 planks / 1.73 m ²	229 × 1220 - 8 planks / 2.23 m ²
Number of planks or tiles per box / Sqm per box		m ²				

CLASSIFICATION

Norm / Product Specification	-	-	EN ISO 10582	EN ISO 10582	EN ISO 10582	EN ISO 10582
European Classification	EN ISO 10874	class	33 - 42	33 - 42	33 - 42	33 - 42
Fire Rating	EN ISO 13 501-1	class	Bfl-s1	Bfl-s1	Bfl-s1	Bfl-s1
Static Electrical Propensity	EN 1815	kV	< 2	< 2	< 2	< 2
Slip Resistance Wet ⁽¹⁾	DIN 51130/ BGR 181	class	R10	R10	R10	R10

PERFORMANCES

Wear Resistance	EN 660.2	mm ³	< 2.0	< 2.0	< 2.0	< 2.0
Wear Group	QB 30	group	T	T	T	T
Type Binder content	ISO 10582	group	I	I	I	I
Dimensional stability (norm)	EN ISO 23999	%	≤ 0.25	≤ 0.15	≤ 0.15	≤ 0.15
Dimensional stability (average measured value)	-	%	≤ 0.10	~ 0.05	≤ 0.10	~ 0.05
Residual Indentation	EN ISO 24343-1	mm	≤ 0.10	≤ 0.10	≤ 0.05	≤ 0.05
Impact sound insulation	EN ISO 717-2	dB	4	4	19	7
Room Impact	NF S 31074	dB	77	79	81	73
Castor chair test	ISO 4918	-	OK	OK	OK	OK
Thermal Conductivity	EN ISO 10456	W/(m.K)	0.25	0.25	0.25	0.25
Colour Fastness	EN ISO 105-B02	Degree	≥ 6	≥ 6	≥ 6	≥ 6
Surface Treatment	-	-	ProtecShield™	ProtecShield™	ProtecShield™	ProtecShield™
Chemical Products Resistance	EN ISO 26987	-	OK	OK	OK	OK

INDOOR AIR QUALITY

TVOC after 28 days	ISO 16000-6	micrograms /m ³	≤ 10	≤ 10	≤ 10	≤ 10
Certification	-	-	Floorscore®	Floorscore®	Floorscore®	Floorscore®

CE MARKING

CE	EN 14041	-	
----	----------	---	--

⁽¹⁾ Ramp test with oil

CREATION, NO FORMALDEHYDE, BETTER INDOOR AIR QUALITY



COMPOSITION
REACH/Phthalate Free:
All of our products
are compliant



INDOOR AIR QUALITY
TVOC: All of our CREATION
products are <10µg
No formaldehyde emission



RECYCLED CONTENT
Dryback: up to 35%
Solid Clic: up to 55%
Rigid Acoustic: up to 35%
Looselay: up to 35%



RECYCLABILITY
All of our products are
100% recyclable



WELLNESS
Walking noise
reduction:
-10dB vs laminate

UK Reference: March 2023

IMPORTANT: The information contained in this document is valid from March 2023 and is subject to change at any time without notice. In the context of constantly changing technology, our customers are responsible, prior to any use, for checking with us that this document is the version in force. Fast delivery is subject to product availability.



For more information please contact us

UNITED KINGDOM:

Gerflor Flooring UK Ltd
Park Green, Macclesfield,
Cheshire, SK11 7LZ
Tel: +44 (0) 1625 428 922
E-mail: contractuk@gerflor.com
Visit: www.gerflor.co.uk

March 2023

Uniclass Pr_35_57_71_76			
Cl / Sfb			
	(43)	Tn6	

IRELAND:

Gerflor Ltd
Ballybay Road, Carrickmacross,
Co. Monaghan, Republic of Ireland
Tel: +353 (0) 42 966 1431
E-mail: gerflorir@gerflor.com
Visit: www.gerflor.ie

we care / we act Our commitments for a sustainable future



CARBON FOOTPRINT*
-20 % kg
CO₂ equivalent/m²
between 2020 and 2025



BIOSOURCED CONTENT**
10 % by 2025



RECYCLED CONTENT
30 % by 2025



ADHESIVE FREE***
35 % by 2025



ANNUAL VOLUME RECYCLED
60 000 t by 2025



* Scopes 1 and 2 defined in the GHG protocol ** % of activity with biosourced materials *** % of activity - adhesive free solution