

# griptex

## Additions | 2006

A special GripX anti-slip surface layer gives you the confidence of a surer grip even when wet and the added waterproof interlayer means Griptex Additions is ideal for any room where liquids may be spilt. A patented fluffy polyester backing also gives you the added benefits of warmth & comfort, sound insulation and ease of fitting.

### Easy to clean & slip resistant

#### **Slip resistant / hygienic** Surface layer

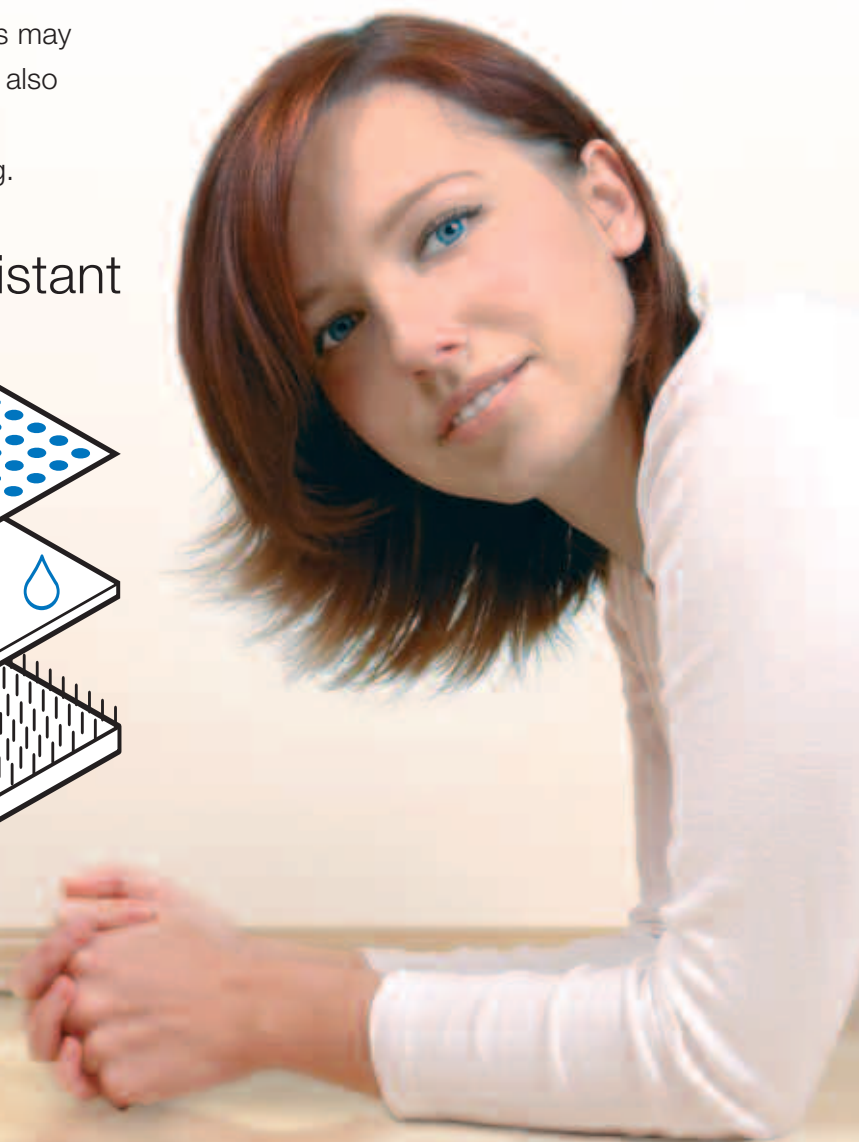
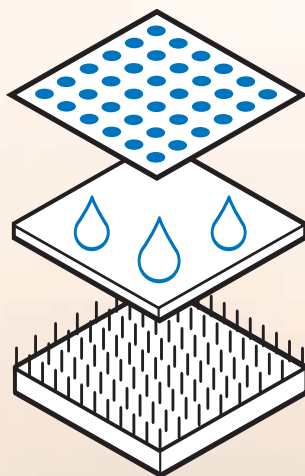
Tough wear layer with PU varnish.  
Built with GripX slip resistant technology.

#### **Waterproof** Glass fibre interlayer

Waterproof from above & below.  
Gives dimensional stability.  
Helps smooth unevenness in the subfloors.

#### **Easy to fit** Polyester textile backing layer

Sound insulating.  
Warm & comfortable.  
Anti-mildew bonding layer.  
Can be laid over most existing smooth floorcoverings.



**Gerflor**

Floors to match your imagination



0598 **Kirsch Jabota**



0680 **Kirch Medium**



0783 **Bosco Clair**



0471 **Bamboo Beige**



0475 **Noma Chocolate**



0527 **Bella Natural**



0528 **Bella Earth**



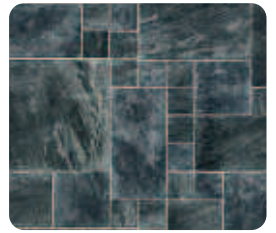
0537 **Bella Red**



1004 **Ardoise Terracotta**



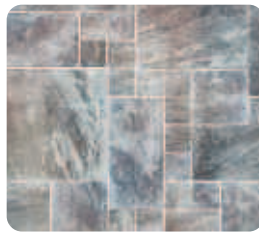
0496 **Ardoise Black**



0872 **Offset Black**



0873 **Offset Beige**



1005 **Offset Grey**



0596 **Alba Chocolate**



0123 **Rustic Beige**



0161 **Rustic Mastic**



0176 **Rustic White**

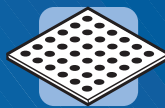
# griptex

Additions 2006

Easy to clean & slip resistant flooring from Gerflor.



Width Codes: 2m 1338 3m 1608 4m 1508



The surface layer of Griptex is slightly roughened with GripX surface technology - this does not mean you will not fall down, but it is less likely.

- Hygienic & easy to clean PU surface coating
- Helps stop the spread of dirt & bacteria



Waterproof barrier stops water from above & below. The glass fibre interlayer helps stop the flooring stretching and distorting & smooths small imperfections in the subfloor.



This unique polyester backing system is 50% warmer than an equivalent thickness of ordinary vinyl. The backing helps resist indentation and is bonded with an anti-mildew coating that helps prevent the spread of bacteria & mould.

## Gerflor UK LTD, UK

Wedgnoek House, Wedgnoek Lane, Warwick, CV34 5AP  
Telephone: 01926 401500, Fax: 01926 401651  
Email: residential@gerflor.com

## Gerflor UK LTD, IRELAND

Telephone: 042-96 61431, Fax: 042-96 61759  
Email: residentialirl@gerflor.com



Floors to match your imagination